

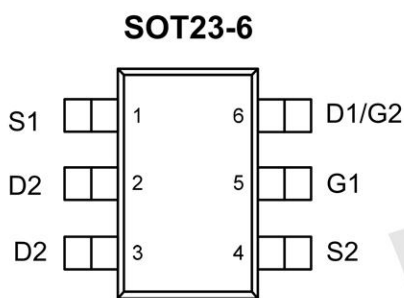
Product Summary

- 1.8V to 8V Input
- 1.5V to 8V Logic Level Control
- Low Profile, Small Footprint SOT23-6 Package
- 2000V ESD Protection on Input Switch
- Adjustable Slew-Rate

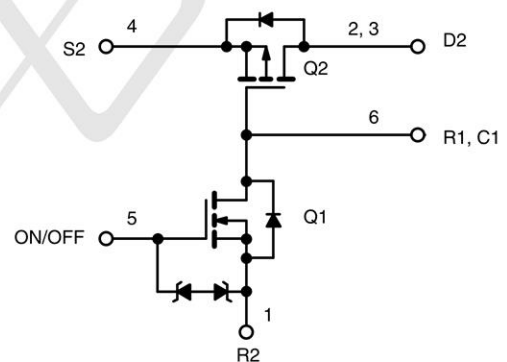
Application

- Battery Packs
- Battery-Powered Portable Equipment
- Cellular and Cordless Telephones

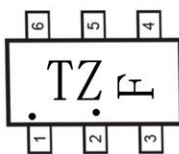
Package and Pin Configuration



Circuit diagram



Marking:



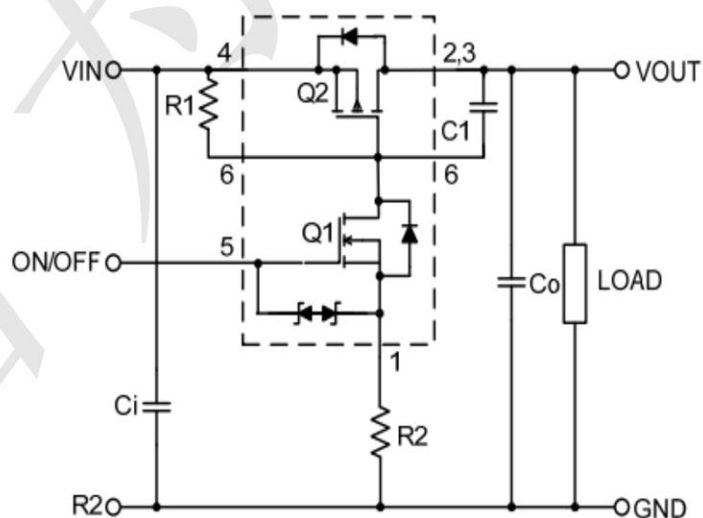
Absolute Maximum Ratings (T_A=25°C unless otherwise noted)

Symbol	Parameter	Limit	Unit
V _{IN}	Input Voltage	8	V
V _{ON/OFF}	ON/OFF Voltage	8	
I _L	Continuous Load Current	±3.5	A
	Pulse Load Current	±10	
I _S	Continuous Source Current (Source-Drain Diode)	±2.5	
P _D	Maximum Power Dissipation	0.85	W
T _J , T _{STG}	Junction and Storage Temperature Range	-50 to +150	°C
ESD	ESD Rating, MIL-STD-883D HBM	2000	V
R _{θJA}	Thermal Resistance, Junction-to-Ambient	250	°C/W

Electrical Characteristics ($T_A = 25^\circ\text{C}$ unless otherwise noted)

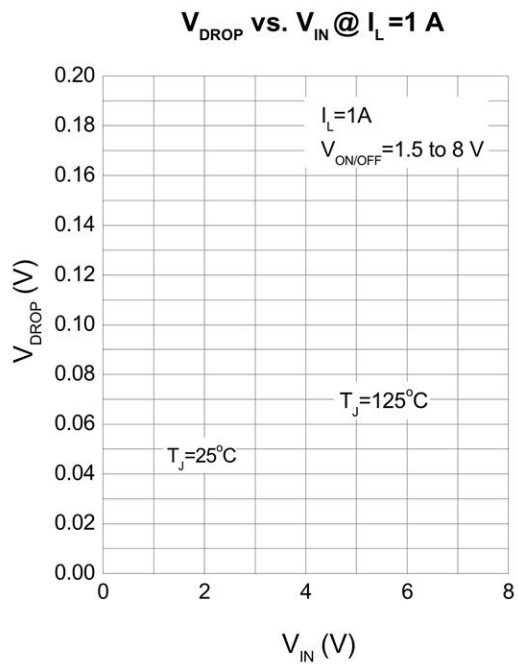
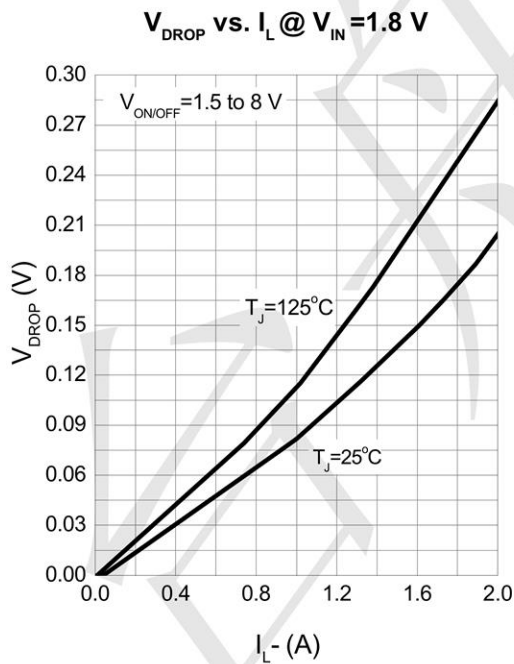
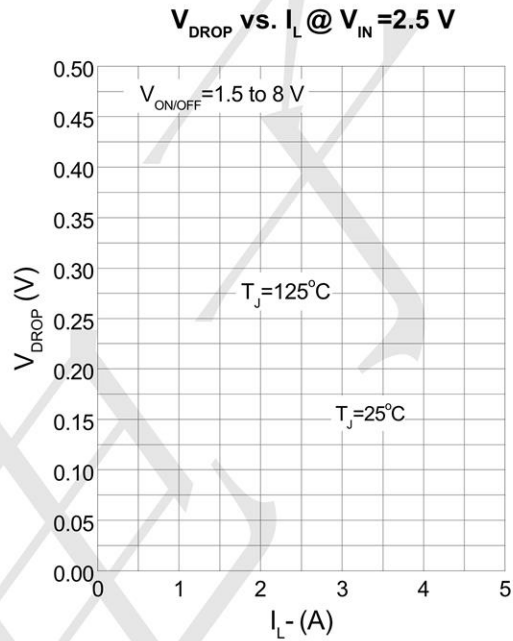
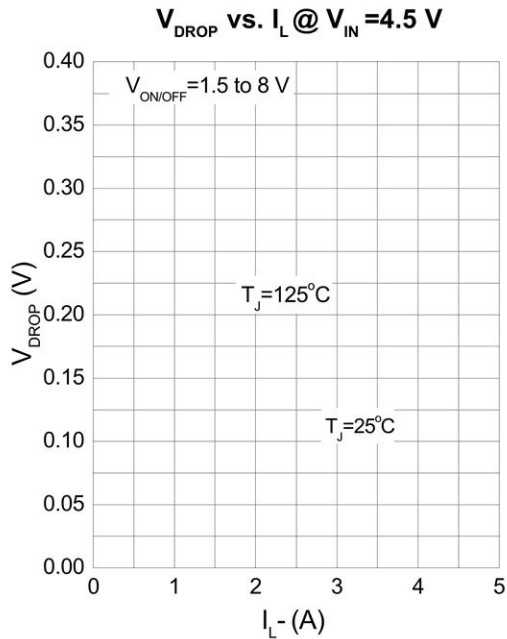
Symbol	Parameter	Test Condition	Min	Typ	Max	Unit
OFF Characteristics						
I_{FL}	Reverse Leakage Current	$V_{IN}=8\text{V}, V_{ON/OFF}=0\text{V}$			1	μA
V_{SD}	Diode Forward Voltage	$I_S=-1\text{A}$		-0.7	-1	V
ON Characteristics						
V_{IN}	Input Voltage Range		1.5		8.0	V
$R_{DS(ON)}$	Static Drain-to-Source On-Resistance	$V_{ON/OFF}=1.5\text{V}, V_{IN}=4.5\text{V}, I_D=1.0\text{A}$		0.045	0.059	Ω
		$V_{ON/OFF}=1.5\text{V}, V_{IN}=2.5\text{V}, I=1.0\text{A}$		0.055	0.070	
		$V_{ON/OFF}=1.5\text{V}, V_{IN}=1.8\text{V}, I=1.0\text{A}$		0.080	0.150	
$I_{D(on)}$	On-State (P-Channel) Drain Current	$V_{IN-OUT}\leq 0.2\text{V}, V_{IN}=5\text{V}, V_{ON/OFF}=1.5\text{V}$	1			A
		$V_{IN-OUT}\leq 0.3\text{V}, V_{IN}=3\text{V}, V_{ON/OFF}=1.5\text{V}$	1			

Typical Application Circuit



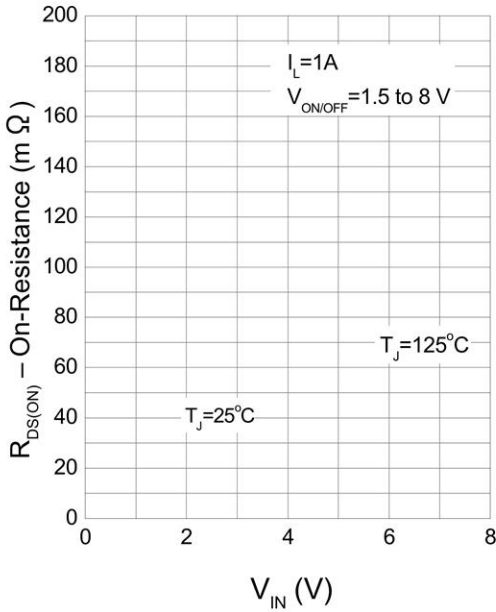
COMPONENTS		
R1	Pull-Up Resistor	Typical 10k Ω to 1M Ω *
R2	Optional Slew-Rate Control	Typical 0 to 100k Ω
C1	Optional Slew-Rate Control	Typical 1000pF

Typical Operating Characteristics

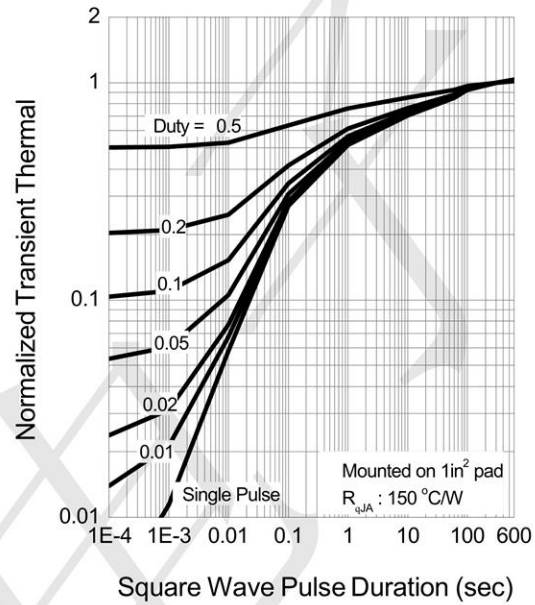




On-Resistance vs. Input Voltage

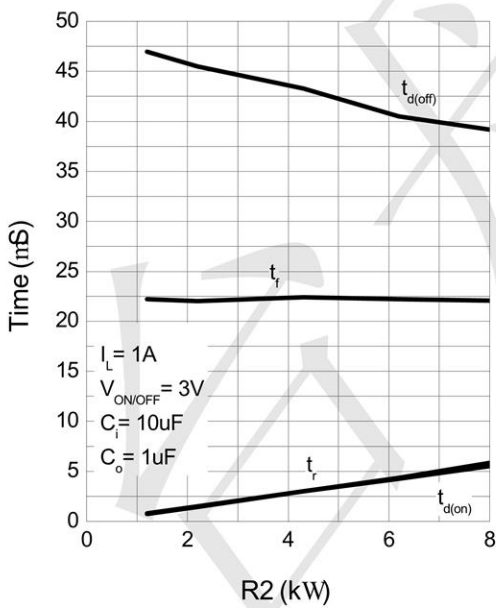


Thermal Transient Impedance



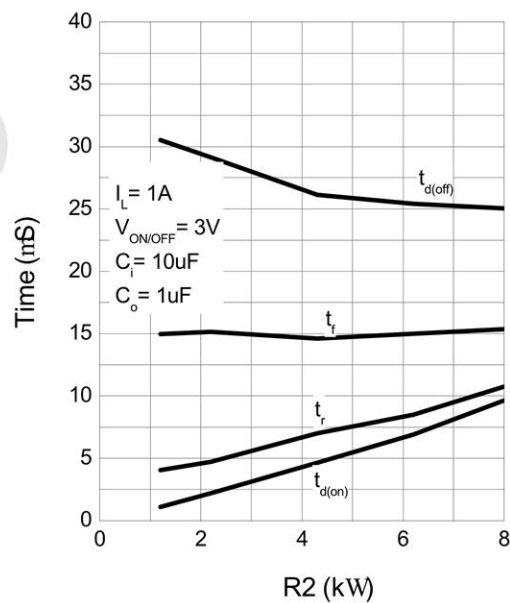
Switching Variation

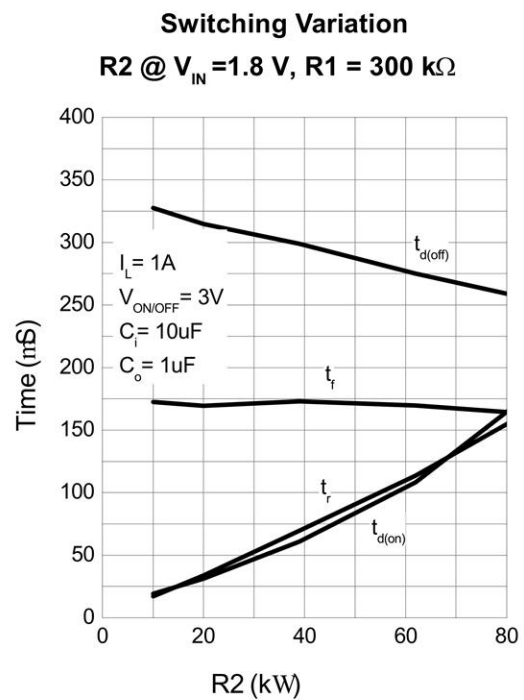
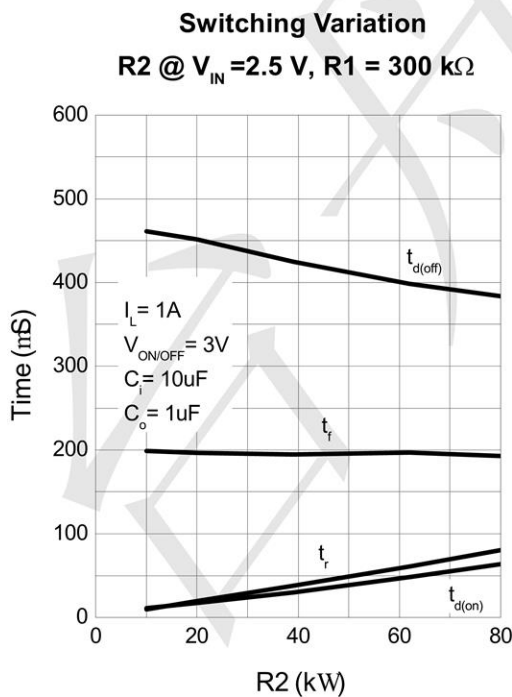
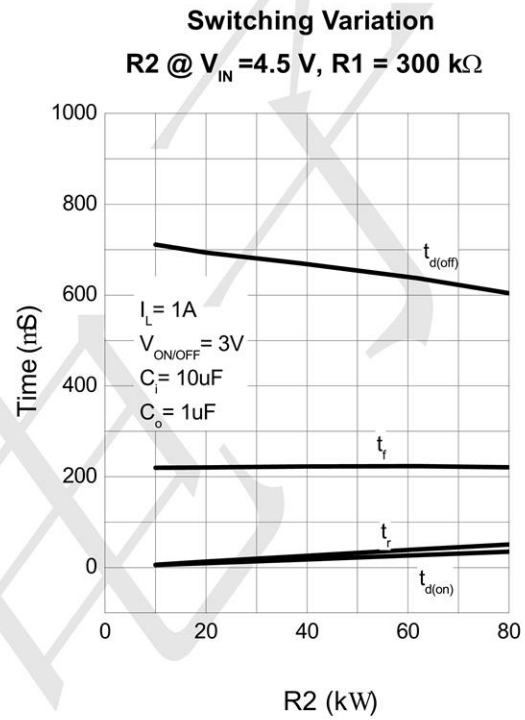
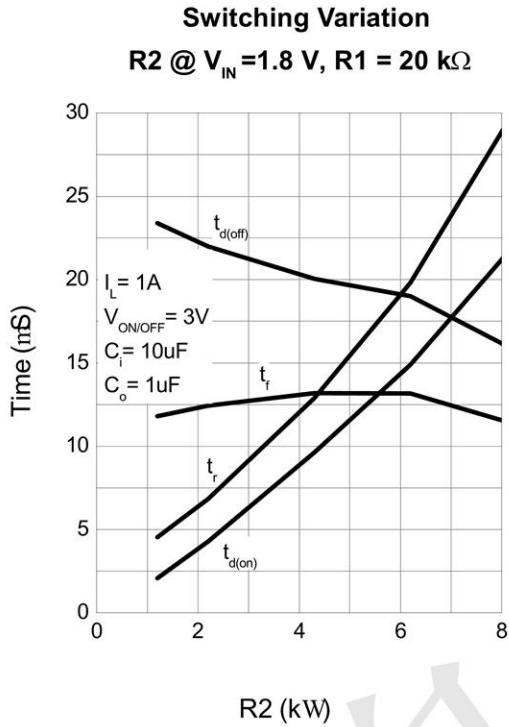
R2 @ $V_{IN} = 4.5 \text{ V}$, R1 = 20 k Ω



Switching Variation

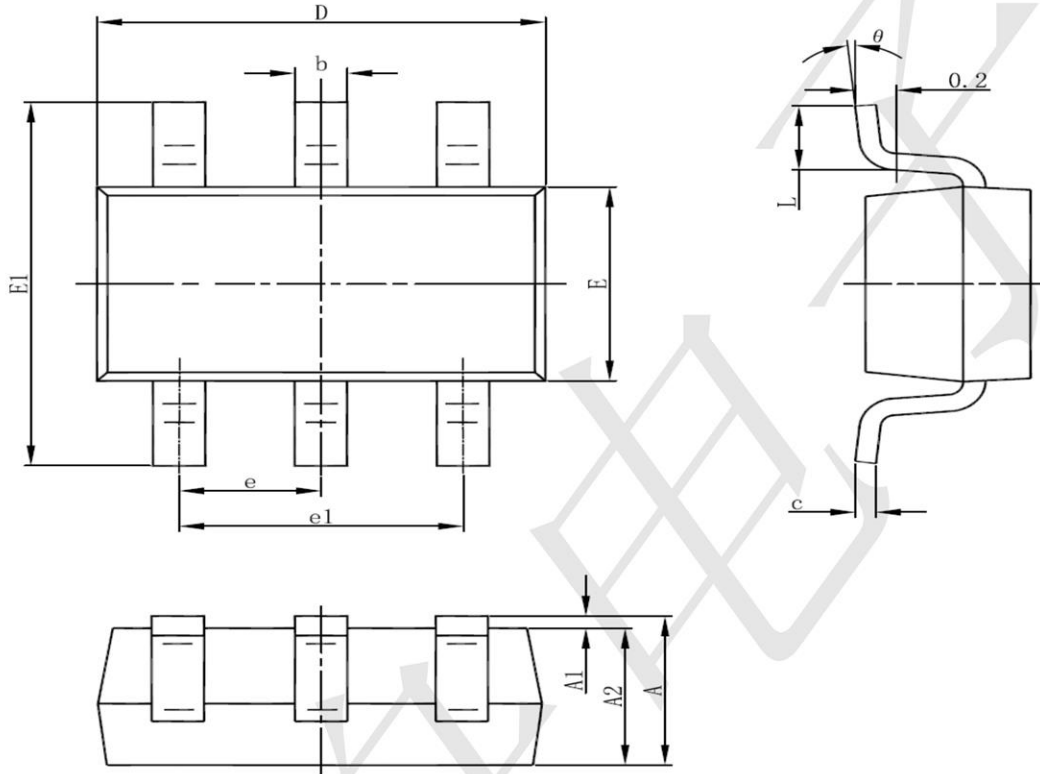
R2 @ $V_{IN} = 2.5 \text{ V}$, R1 = 20 k Ω







SOT23-6 Package Information



Symbol	Dimensions In Millimeters		Dimensions In Inches	
	Min	Max	Min	Max
A	1.050	1.250	0.041	0.049
A1	0.000	0.100	0.000	0.004
A2	1.050	1.150	0.041	0.045
b	0.300	0.500	0.012	0.020
c	0.100	0.200	0.004	0.008
D	2.820	3.020	0.111	0.119
E	1.500	1.700	0.059	0.067
E1	2.650	2.950	0.104	0.116
e	0.950(BSC)		0.037(BSC)	
e1	1.800	2.000	0.071	0.079
L	0.300	0.600	0.012	0.024
θ	0°	8°	0°	8°