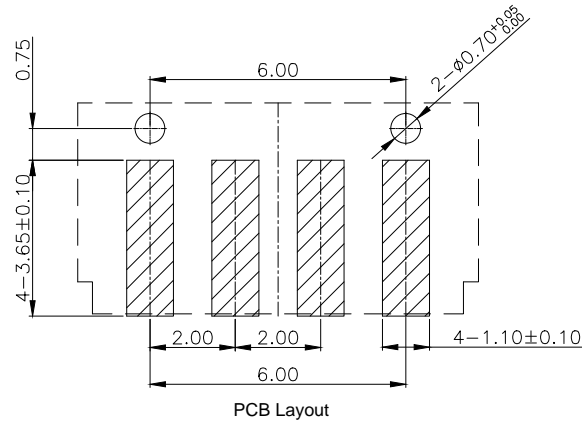
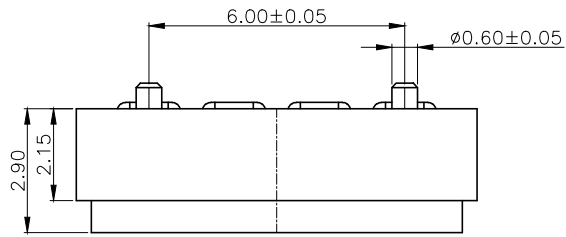
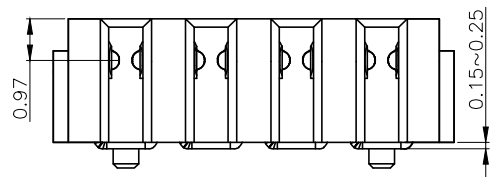
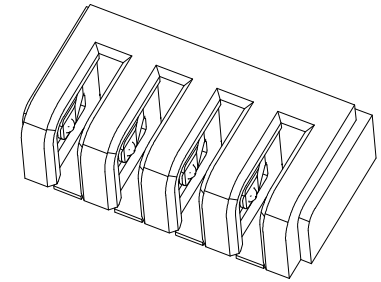
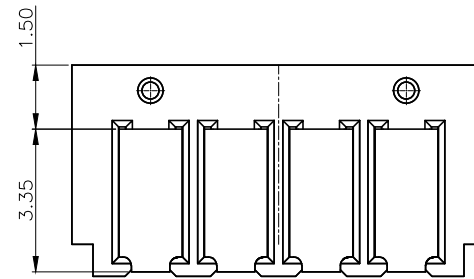
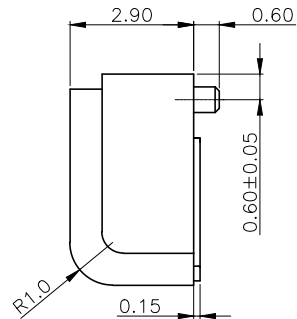
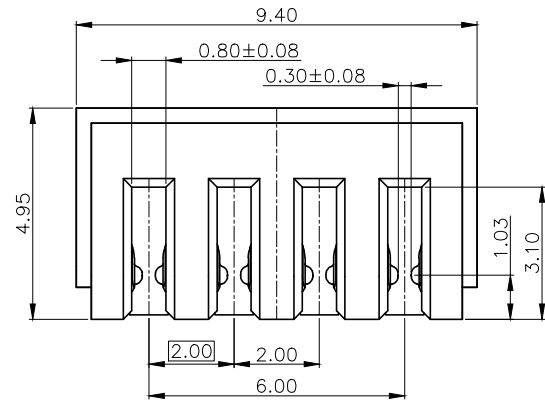


REV.	DATE	MODIFICATION	APPROVER



SPECIFICATION

1. Mechanical performance:
 - 1.1 Insertion and extraction force:0.1~2.0kgf,
 - 1.2 Durability:3000 cycles .
2. Electrical and environment performance
 - 2.1 Current rating:1A
 - 2.2 Voltage rating:8V
 - 2.3 Insulation resistance:100MΩ Min. at 500V DC(After Testing)
 - 2.4 Terminal contact resistance:30mΩ Max.
 - 2.5 Withstanding voltage:500V(r.m.s.)AC at 1mA Max. for one minute
 - 2.6 Operating temperature: -20℃~ +80℃



②	TERMINAL	COPPER ALLOY		
①	HOUSING	PA46	BLACK	UL94V-0
NO.	DESCRIPTION	MATERIAL	COLOR	REMARK

GENERAL TOLERANCE			
SELECT	✓		
TOL.	1	2	3
DN.	X.XXX	±0.10±0.05±0.15	
	X.XX	±0.15±0.13±0.25	
	X.X	±0.20±0.25 ±0.5	
	X.	±0.30±0.38 ±1.00	
ANGLE	±2°		

UNITS	mm
MAT'L	
FINISH	
Q'TY	

NAME:	BATTERY 4P
PART NO:	BA20004-A290202
APPD:	<i>Fason_Luo</i>
CHKD:	Vicky
DR:	DAVID

深圳市爱特姆科技有限公司 SHENZHEN ATOM TECHNOLOGY CO., LTD.			
TITLE: BATTERY 2.0mm 4P SMT H=2.9mm 带定位柱 端子镀金1u” 卷装		DWG NO. ATOM-A04485	
SCALE	SHEET	REV	
1:1	1 OF 1	AO	