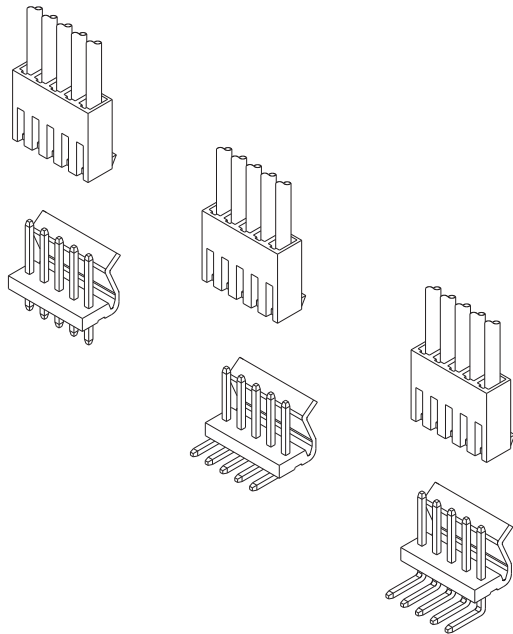


技术特性/Specifications:

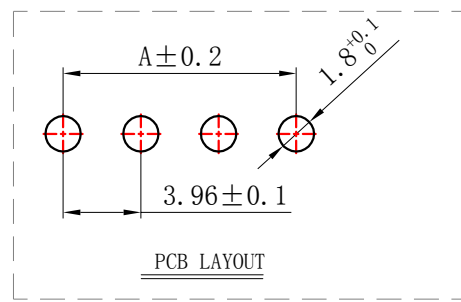
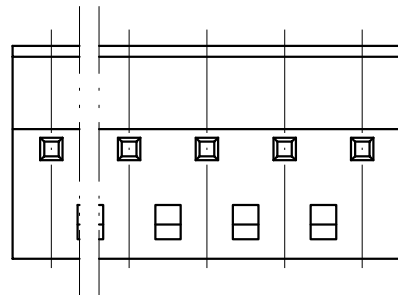
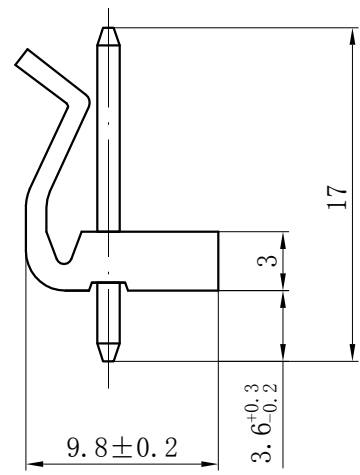
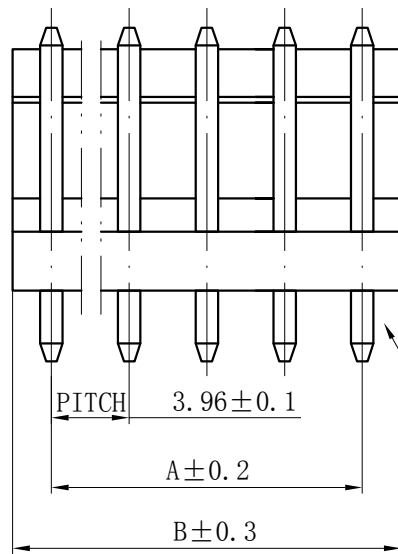
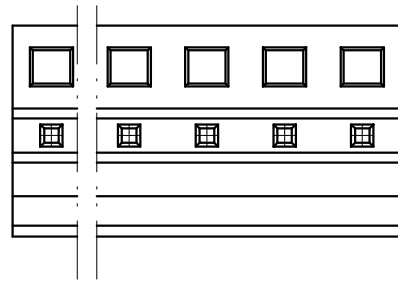
额定电压 Rated voltage: 250V AC, DC
额定电流 Rated current: 5A AC, DC
接触电阻 Contact resistance: 20m Ω max
绝缘电阻 Insulation resistance: 1000M Ω min
耐压 Withstand voltage: 1500V AC/minute
环境温度 Ambient temperature: -40 $^{\circ}$ C~+105 $^{\circ}$ C
适用线规 Wire range: AWG#24~#18



| REV. | REVISION DESCRIPTION | DATE |
|------|----------------------|------|
| | | |

NORES:

1. Rated voltage: 250V AC.DC
2. Rated current: 5A AC DC
3. Contact resistance: $\leq 20 \text{ m}\Omega$
4. Insulation resistance: $\geq 1000 \text{ m}\Omega$
5. Withstand voltage: 1500V AC/minute
6. Ambient temprature: $-40^{\circ}\text{C} \sim 105^{\circ}\text{C}$
7. Materials: Nylon UL94V-0(2)
8. Matched RoHS criteria



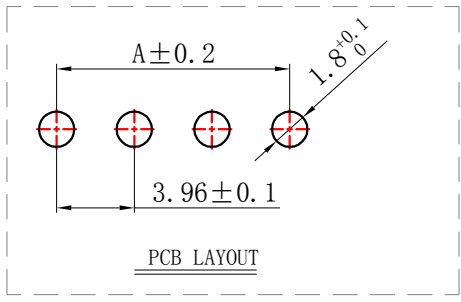
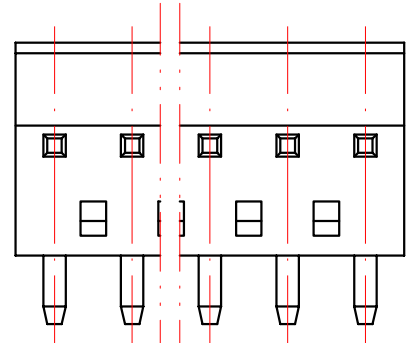
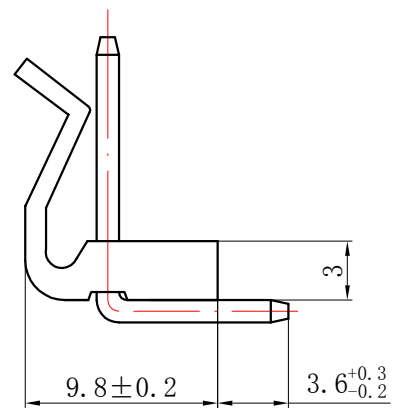
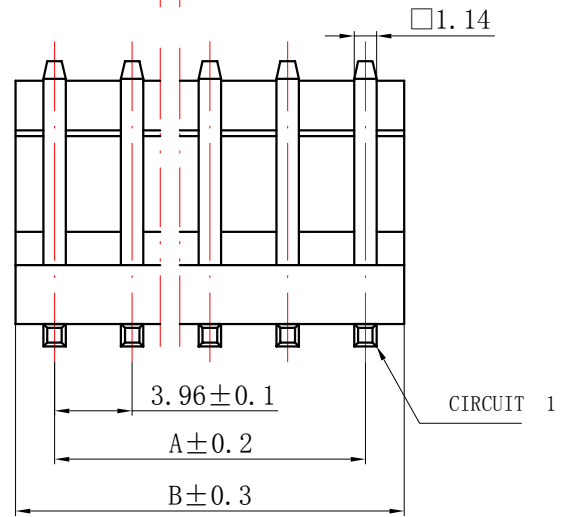
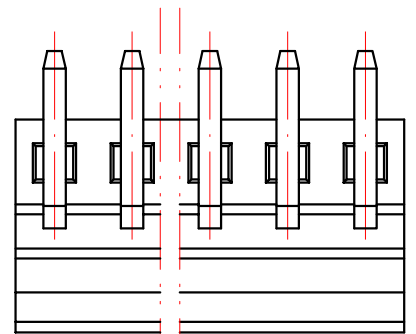
| Circuits | Product name | Dimension mm | |
|----------|--------------|--------------|-------|
| | | A | B |
| 02 | 3.96-2A | 3.96 | 7.92 |
| 03 | 3.96-3A | 7.92 | 11.88 |
| 04 | 3.96-4A | 11.88 | 15.84 |
| 05 | 3.96-5A | 15.84 | 19.80 |
| 06 | 3.96-6A | 19.80 | 23.76 |
| 07 | 3.96-7A | 23.76 | 27.72 |
| 08 | 3.96-8A | 27.72 | 31.68 |
| 09 | 3.96-9A | 31.68 | 35.64 |
| 10 | 3.96-10A | 35.64 | 39.60 |
| 11 | 3.96-11A | 39.60 | 43.56 |
| 12 | 3.96-12A | 43.56 | 47.52 |
| 13 | 3.96-13A | 47.52 | 51.48 |
| 14 | 3.96-14A | 51.48 | 55.44 |
| 15 | 3.96-15A | 55.44 | 59.40 |

| GENERAL TOLERANCES (UNLESS SPECIFIED) | | ZHE JIANG DELI CONNECTORS CO., LTD | |
|---------------------------------------|--------------|------------------------------------|--|
| .X: ± 0.25 | X°: ± 3.0° | PRODUCT NAME: | TITLE: 3.96 mm Pitch Wire To Board Wafer |
| .XX: ± 0.15 | .X°: ± 2.0° | DL39601(3.96)-A | |
| .XXX: ± 0.01 | .XX°: ± 1.0° | DR: Yuan Jun Rong | DATE:19/08/01 |
| FINISH: | | CHKD: Wu Hui | DATE:19/08/01 |
| DRAWING NO: | | APPD:Ren An De | DATE:19/08/01 |
| | | SCALE: N/A | PAGE: 1/1 |
| | | UNITS: mm | REV.: A |

| REV. | REVISION DESCRIPTION | DATE |
|------|----------------------|------|
| | | |

NOES:

1. Rated voltage: 250V AC.DC
2. Rated current: 5A AC DC
3. Contact resistance: $\leq 20 \text{ m}\Omega$
4. Insulation resistance: $\geq 1000 \text{ m}\Omega$
5. Withstand voltage: 1500V AC/minute
6. Ambient temprature: $-40^{\circ}\text{C} \sim 105^{\circ}\text{C}$
7. Materials: Nylon UL94V-0 (2)
8. Matched RoHS criteria



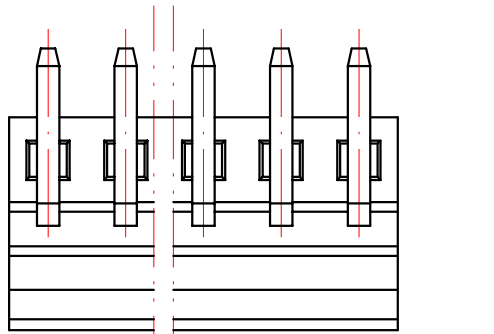
| Circuits | Product name | Dimension mm | |
|----------|--------------|--------------|-------|
| | | A | B |
| 02 | 3.96-2AW | 3.96 | 7.92 |
| 03 | 3.96-3AW | 7.92 | 11.88 |
| 04 | 3.96-4AW | 11.88 | 15.84 |
| 05 | 3.96-5AW | 15.84 | 19.80 |
| 06 | 3.96-6AW | 19.80 | 23.76 |
| 07 | 3.96-7AW | 23.76 | 27.72 |
| 08 | 3.96-8AW | 27.72 | 31.68 |
| 09 | 3.96-9AW | 31.68 | 35.64 |
| 10 | 3.96-10AW | 35.64 | 39.60 |
| 11 | 3.96-11AW | 39.60 | 43.56 |
| 12 | 3.96-12AW | 43.56 | 47.52 |
| 13 | 3.96-13AW | 47.52 | 51.48 |
| 14 | 3.96-14AW | 51.48 | 55.44 |
| 15 | 3.96-15AW | 55.44 | 59.40 |

| GENERAL TOLERANCES (UNLESS SPECIFIED) | | ZHE JIANG DELI CONNECTORS CO ., LTD | |
|---------------------------------------|---------------|-------------------------------------|--|
| .X: ± 0.25 | X° : ± 3.0° | PRODUCT NAME: | TITLE: 3.96 mm Pitch Wire To Board Wafer |
| .XX: ± 0.15 | .X° : ± 2.0° | DL39601 (3.96)-AW | |
| .XXX: ± 0.01 | .XX° : ± 1.0° | DR: Yuan Jun Rong | DATE: 19/08/01 |
| FINISH: | | CHKD: Wu Hui | DATE: 19/08/01 |
| DRAWING NO: | | APPD: Ren An De | DATE: 19/08/01 |
| | | SCALE: N/A | PAGE: 1/1 |
| | | UNITS: mm | REV.: A |

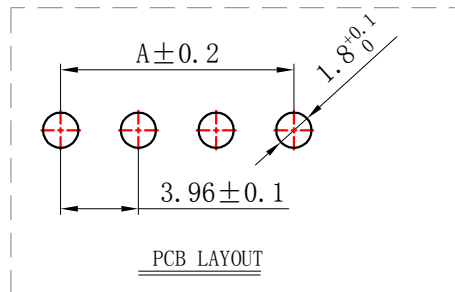
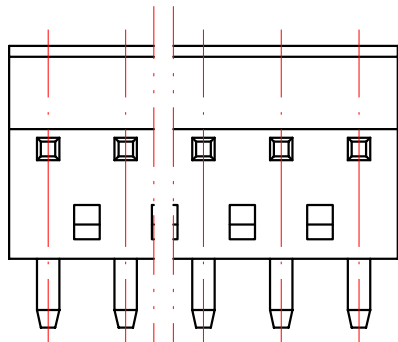
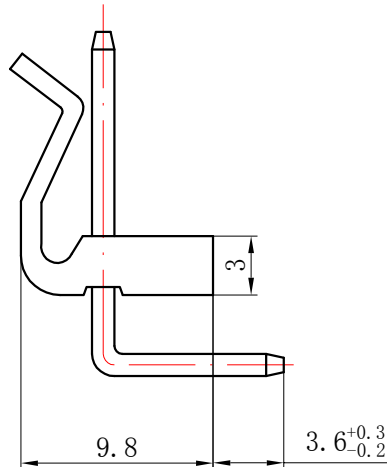
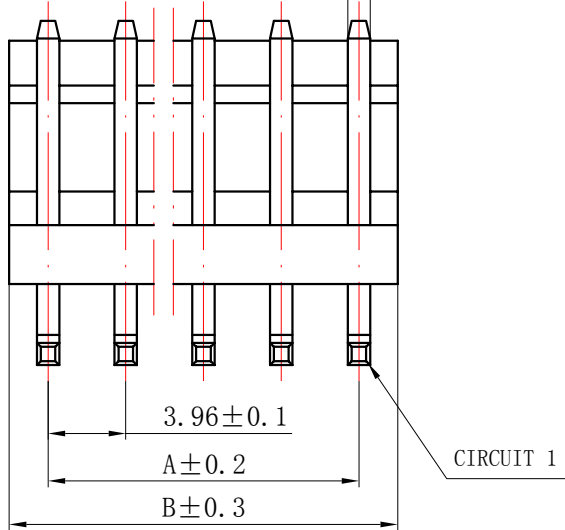
| REV. | REVISION DESCRIPTION | DATE |
|------|----------------------|------|
| | | |

NOTES:

1. Rated voltage: 250V AC. DC
2. Rated current: 5A AC DC
3. Contact resistance: $\leq 20 \text{ m}\Omega$
4. Insulation resistance: $\geq 1000 \text{ m}\Omega$
5. Withstand voltage: 1500V AC/minute
6. Ambient temprature: $-40^{\circ}\text{C} \sim 105^{\circ}\text{C}$
7. Materials: Nylon UL94V-0(2)
8. Matched RoHS criteria



□ 1.14



| Circuits | Product name | Dimension mm | |
|----------|--------------|--------------|-------|
| | | A | B |
| 02 | 3.96-2AWT | 3.96 | 7.92 |
| 03 | 3.96-3AWT | 7.92 | 11.88 |
| 04 | 3.96-4AWT | 11.88 | 15.84 |
| 05 | 3.96-5AWT | 15.84 | 19.80 |
| 06 | 3.96-6AWT | 19.80 | 23.76 |
| 07 | 3.96-7AWT | 23.76 | 27.72 |
| 08 | 3.96-8AWT | 27.72 | 31.68 |
| 09 | 3.96-9AWT | 31.68 | 35.64 |
| 10 | 3.96-10AWT | 35.64 | 39.60 |
| 11 | 3.96-11AWT | 39.60 | 43.56 |
| 12 | 3.96-12AWT | 43.56 | 47.52 |
| 13 | 3.96-13AWT | 47.52 | 51.48 |
| 14 | 3.96-14AWT | 51.48 | 55.44 |
| 15 | 3.96-15AWT | 55.44 | 59.40 |

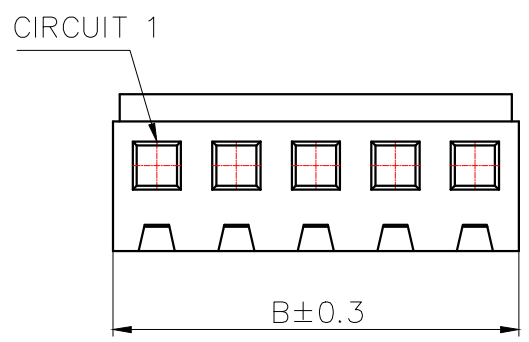
| | | | |
|---------------------------------------|-----------------|------------------------------------|----------------------|
| GENERAL TOLERANCES (UNLESS SPECIFIED) | | ZHE JIANG DELI CONNECTORS CO., LTD | |
| .X: ± 0.25 | X°: ± 3.0° | PRODUCT NAME: | TITLE: 3.96 mm Pitch |
| .XX: ± 0.15 | .X°: ± 2.0° | DL39601(3.96)-AWT | Wire To Board Wafer |
| .XXX: ± 0.01 | .XX°: ± 1.0° | DR: Chen Quan Long | DATE: 09/08/01 |
| FINISH: | | CHKD: Wu Hui | DATE: 09/08/01 |
| DRAWING NO: | APPD: Ren An De | DATE: 09/08/01 | SCALE: N/A |
| | | | PAGE: 1/1 |
| | | | UNITS: mm |
| | | | REV.: A |

| | | |
|------|----------------------|------|
| REV. | REVISION DESCRIPTION | DATE |
| | | |



NORES :

1. Rated voltage: 250V AC.DC
2. Rated current: 5A AC DC
3. Contact resistance: ≤ 20 m Ω
4. Insulation resistance: ≥ 1000 m Ω
5. Withstand voltage: 1500V AC/minute
6. Ambient temprature: $-10^{\circ}\text{C} \sim 105^{\circ}\text{C}$
7. Materials: Nylon UL94V-0 (2)
8. Matched RoHS criteria



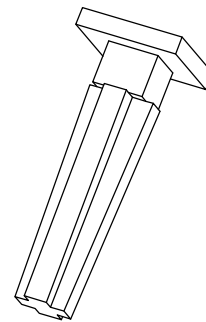
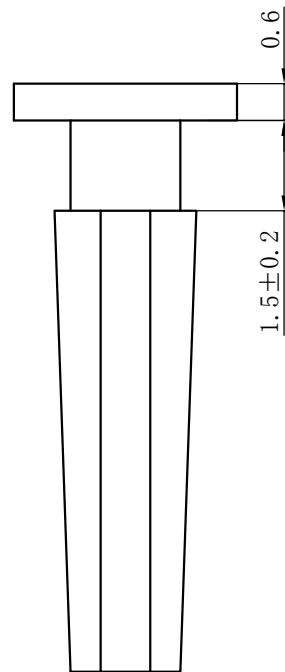
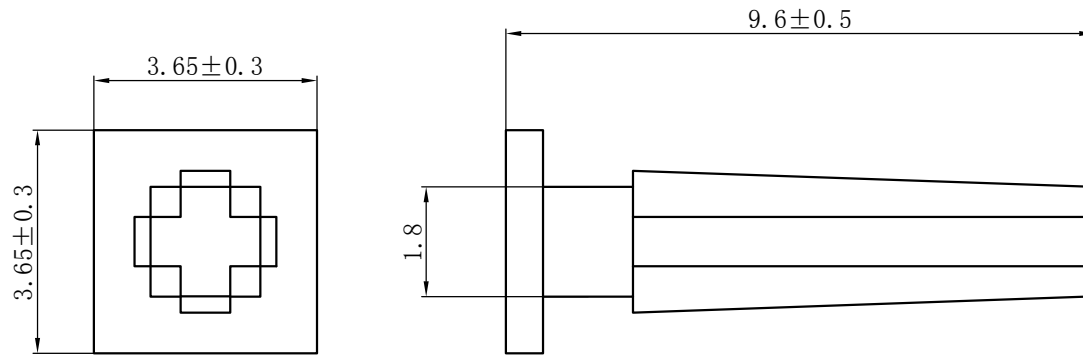
| Circuits | Product name | Dimension mm | |
|----------|--------------|--------------|-------|
| | | A | B |
| 02 | 3.96-2Y | 3.96 | 8.32 |
| 03 | 3.96-3Y | 7.92 | 12.28 |
| 04 | 3.96-4Y | 11.88 | 16.24 |
| 05 | 3.96-5Y | 15.84 | 20.20 |
| 06 | 3.96-6Y | 19.80 | 24.16 |
| 07 | 3.96-7Y | 23.76 | 28.12 |
| 08 | 3.96-8Y | 27.72 | 32.08 |
| 09 | 3.96-9Y | 31.68 | 36.04 |
| 10 | 3.96-10Y | 35.64 | 40.00 |
| 11 | 3.96-11Y | 39.60 | 43.96 |
| 12 | 3.96-12Y | 43.56 | 47.92 |
| 13 | 3.96-13Y | 47.52 | 51.88 |
| 14 | 3.96-14Y | 51.48 | 55.84 |
| 15 | 3.96-15Y | 55.44 | 59.80 |

| | | | |
|---------------------------------------|-------------------------|------------------------------------|--|
| GENERAL TOLERANCES (UNLESS SPECIFIED) | | ZHE JIANG DELI CONNECTORS CO., LTD | |
| .X: ± 0.25 | X°: $\pm 3.0^{\circ}$ | PRODUCT NAME: DL39601 (3.96)-Y | TITLE: 3.96 mm Pitch Wire To Board Wafer |
| .XX: ± 0.15 | .X°: $\pm 2.0^{\circ}$ | DR: Yuan Jun Rong | DATE: 09/08/01 |
| .XXX: ± 0.01 | .XX°: $\pm 1.0^{\circ}$ | CHKD: Wu Hui | DATE: 09/08/01 |
| FINISH: | | APPD: Ren An De | DATE: 09/08/01 |
| DRAWING NO: | | SCALE: N/A | PAGE: 1/1 |
| | | UNITS: mm | REV.: A |

| REV. | REVISION DESCRIPTION | DATE | APPD |
|------|----------------------|------|------|
| | | | |

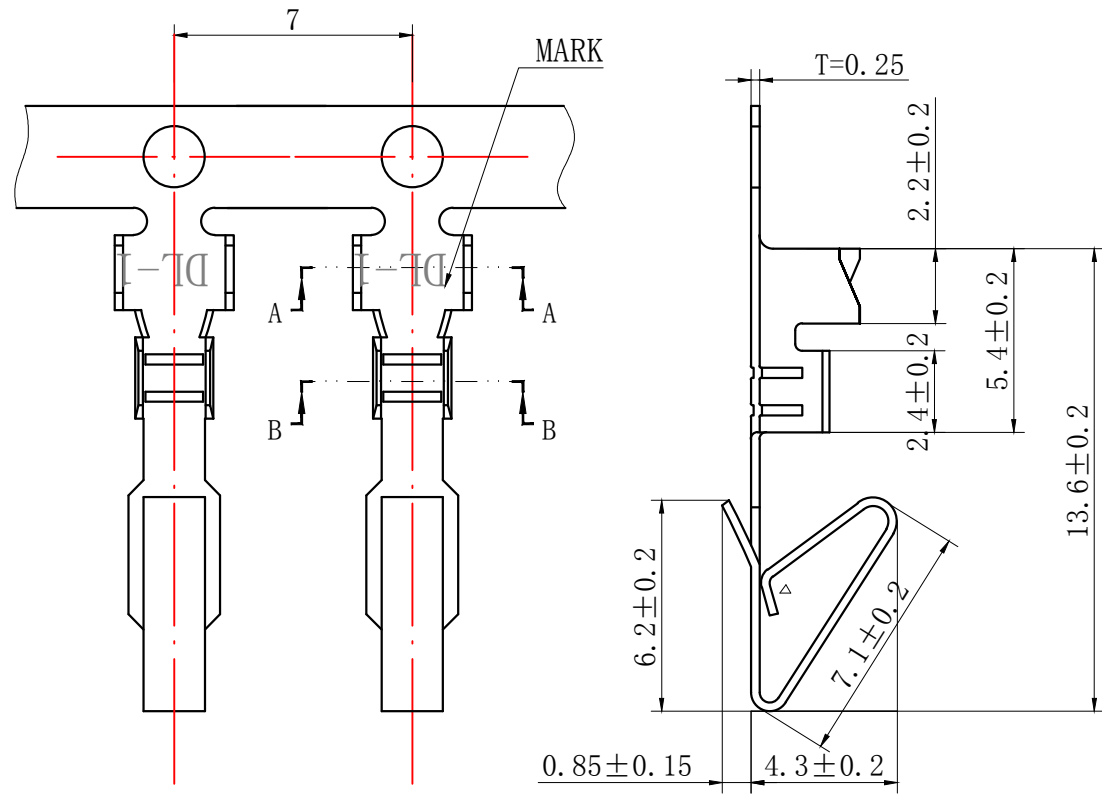
NOTES

Mates with 3.96 Series Housing.
 Material : Nylon UL94V-0(2).
 Green Material RoHS Compliant.



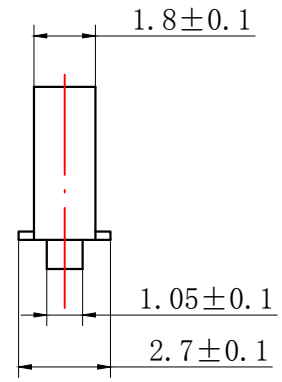
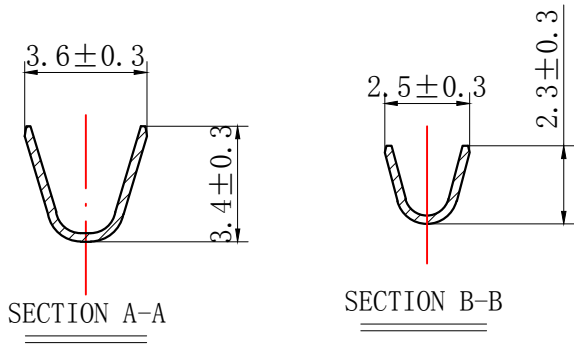
| GENERAL TOLERANCES (UNLESS SPECIFIED) | | ZHE JIANG DELI CONNECTORS CO., LTD | |
|--|---------------|------------------------------------|---|
| .X: ± 0.30 | X° : ± 3.0° | PRODUCT NAME: DL39601(3.96)-1E | TITLE: 3.96 mm Pitch Receptacle Stopper |
| .XX: ± 0.15 | .X° : ± 2.0° | DR:Chen Quan Long | DATE:24.2.22 |
| .XXX: ± 0.01 | .XX° : ± 1.0° | CHKD:Wu Hui | DATE:24.2.22 |
| FINISH: _____ | | APPD:Ren An De | DATE:24.2.22 |
| DRAWING NO: | | UNITS: mm | SCALE: N/A |
| | | | PAGE:1/1 |
| | | | REV.: A |

| REV. | REVISION DESCRIPTION | DATE | APPD |
|------|----------------------|----------|------|
| B | 端子高度尺寸更新 | 19.4.20 | Wu |
| C | 端子倒勾宽度 | 19.10.12 | Wu |



NOTES

Used in DL39601-Y Series Housing.
 Accepts AWG #24~18 Wire Range.
 0.33~ 0.83 mm² .
 Insulation O.D. =1.7~3.0 mm.
 Material : Phosphor Bronze .
 Finish: Tin plated.
 Thickness: 0.25 mm.



| GENERAL TOLERANCES (UNLESS SPECIFIED) | | ZHE JIANG DELI CONNECTORS CO., LTD | |
|---------------------------------------|--------------|------------------------------------|--|
| .X: ± 0.25 | X°: ± 3.0° | PRODUCT NAME: | TITLE: 3.96 mm pitch WTB Crimping Terminal |
| .XX: ± 0.15 | .X°: ± 2.0° | DL39601 (3.96)-T | |
| .XXX: ± 0.01 | .XX°: ± 1.0° | DR: Xian Qiang | DATE: 16.3.3 |
| FINISH: | | CHKD: Liu Bing | DATE: 16.3.3 |
| DRAWING NO: | | APPD: Liu Bing | DATE: 16.3.3 |
| | | SCALE: N/A | PAGE: 1/1 |
| | | UNITS: mm | REV.: C |