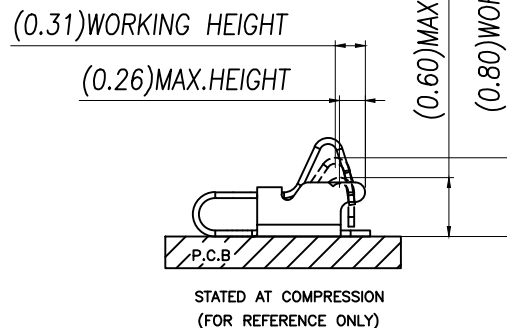
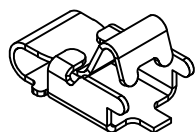
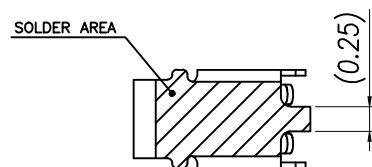

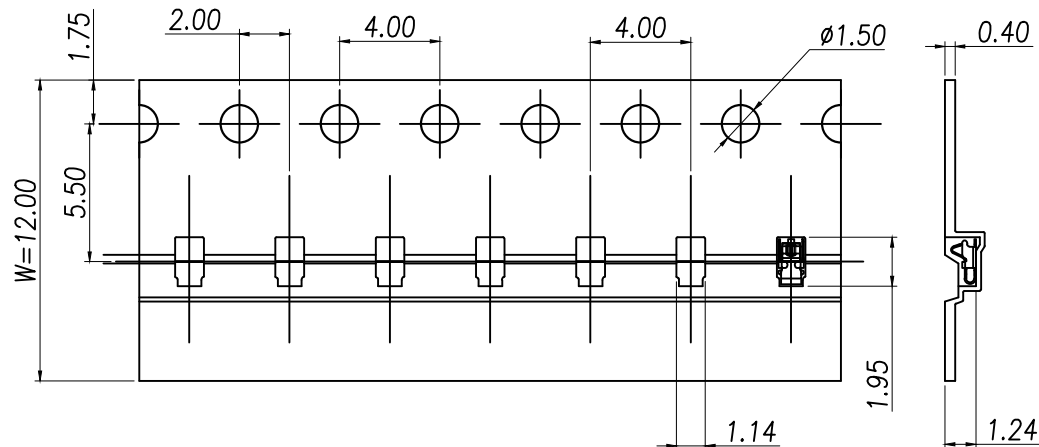
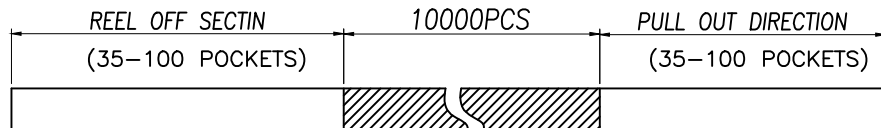


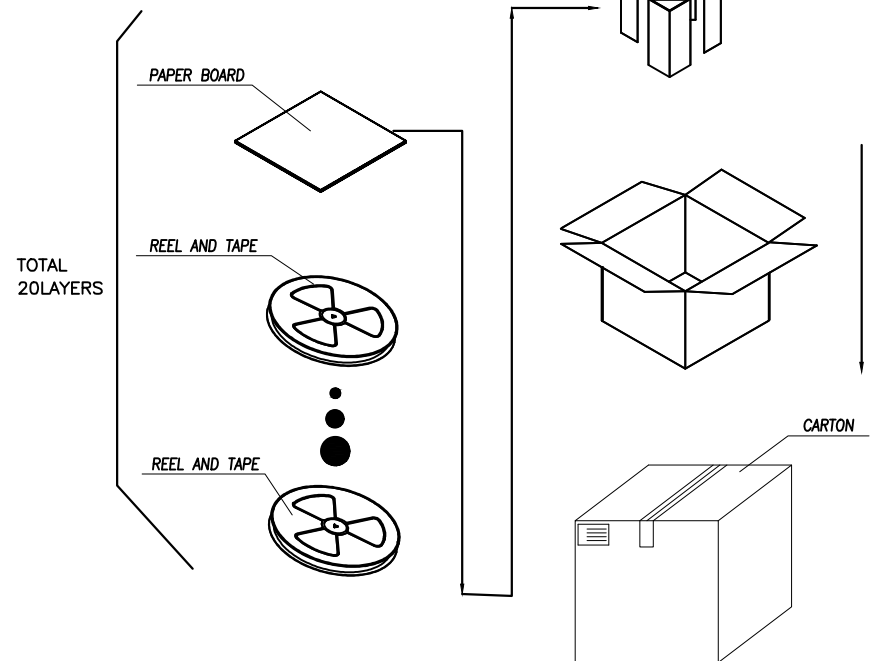
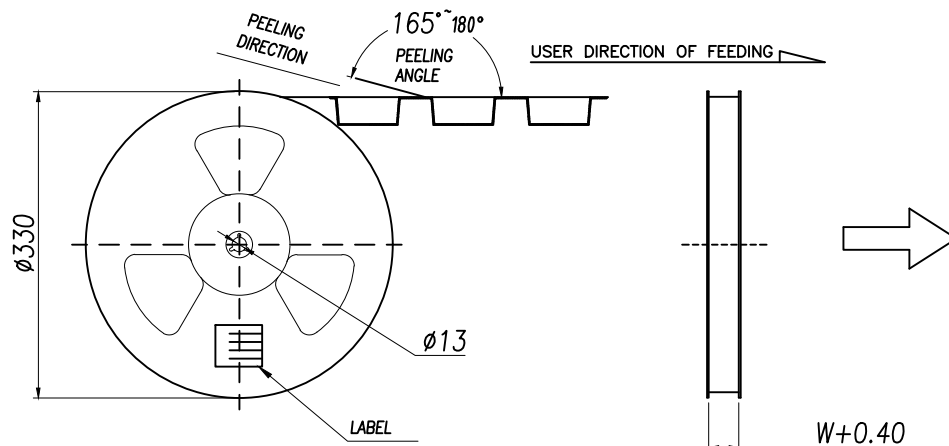
- NOTES
- (1) MATERIAL: SUS-301 THICKNE=0.06mm
  - (2) PRODUCT SPECIFICATIONS:
    - 2-1: RATED CURRENT: 1.0A
    - 2-2: VOLTAGE RATING: 1.50V
    - 2-3: CONTACT RESISTANCE: 80mΩ/MAX
    - 2-4: WELDING THRUST: ≥ 3KG
    - 2-5: OPERATING TEMPERATURE: -40°C~+85°C
    - 2-6: DURABILITY: 1500 CYCLES
  - (3): SALT SPRAY: 24 HOURS
  - (4): FINISH: 50u"Min NICKEL UNDERPLATING OVER ALL.
  - (5): REQUIREMENTS
    - 5-1: TERMINAL TO EAT FULL TIN, NOT PEELING WELDING OBVIOUS COLOR AND OTHER ADVERSE
    - 5-2: ROHS, REACH, HF HALOGEN ADVERSE OF DOMESTIC AND INTERNATIONAL ENVIRONMENTAL REQUIREMENTS



GENERAL TOLERANCES (UNLESS SPECIFIED)	SCALE: 1:1 UNIT: MM		
	DRAWN BY LUDAH		
DISTANCE ANGLE X. ±0.30 X.* ±2.0° .X ±0.20 .X* ±1.0° .XX ±0.15 .XX* ±0.5°	CHECKED BY /	TITLE: 天线弹片 H1.00 ANTENNA	
	DRAFT WHERE APPLICABLE APPROVED BY MUST REMAIN WITHIN DIMENSIONS	PART NO. TP-T0-1011	MANUFACTURE DWG
	LUJIAH	SCALE N:A	SHEET 1:2



← PRODUCT PACKAGING DIRECTION  
CUSTOMER TO USE DIRECTION →



GENERAL TOLERANCES  
(UNLESS SOECIFIED)

SCALE: 1:1  
UNIT: MM

DISTANCE ANGLE  
X. ±0.30 X.\* ±2.0°  
.X ±0.20 .X\* ±1.0°  
.XX ±0.15 .XX\* ±0.5°

DRAWN BY

LUDAH

CHEVKED BY

/

DRAFT WHERE APPLICABLE APPROVED BY  
MUST REMAIN  
WITHIN DIMENSIONS

LUJIAH



瑾珩精密

TITLE: 天线料片  
H1.00 ANTENNA

MANUFACTURE DWG

PART NO.  
TP-T0-1011

SCALE  
N:A

SHEET  
2:2