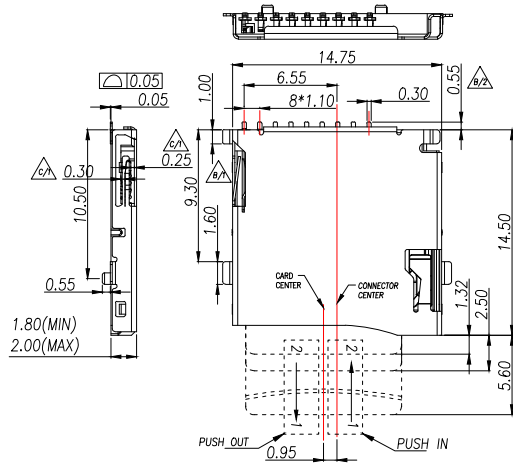
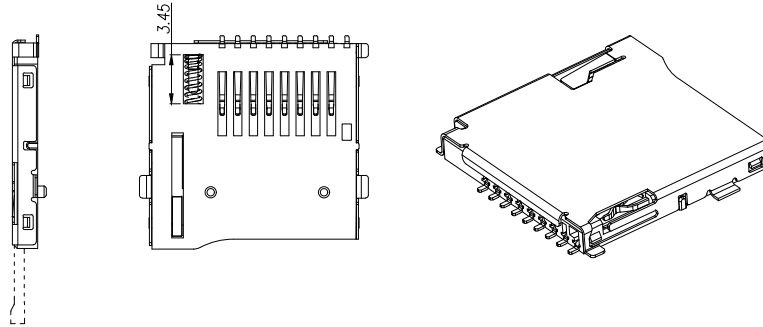


REV.	DESCRIPTION	ECN NO.	NAME	DATE

1



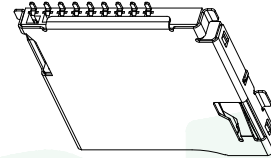
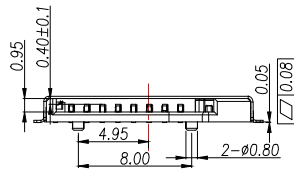
2



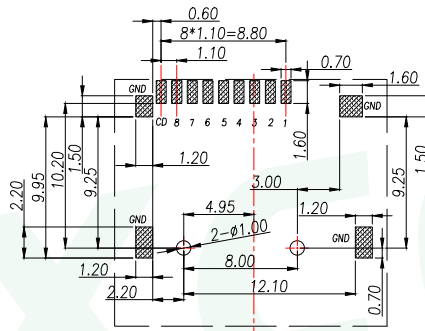
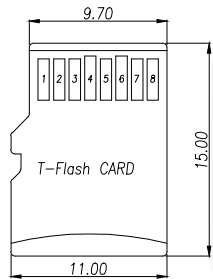
Specification:

- Electrical Characteristics:
  - Contact Current Rating:0.5 Amperes.
  - Dielectric Withstanding Voltage:AC500V r.m.s.
  - Insulation Resistance:1000 MΩ Minimum.
  - Contact Resistance:40 mΩ Maximum.
- Environmental:
  - Operating Temperature:-25°C~+90°C.
- Environmental:
  - Mating Cycles:5,000 Insertions.
- Mechanical Characteristics:
  - Card Push Insertion/Out Force:0.2~1.40kgf.
  - Contact Separation Force:0.20kgf Minimum.
- Material:
  - Insulator:HI-Temp Plastic UL 94V-0 Rated.
  - Contact:Copper Alloy(t=0.15mm).
  - Shell:Stainless Steel(t=0.15mm).
  - Spring:SWP.

3



4



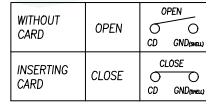
Circuit Diagram for Detect Switch

▨ PAD AREA

■ KEEP OUT AREA

RECOMMENDED PCB LAYOUT

GENERAL TOLERANCE ±0.05



TF CARD PIN DEFINE

PIN NO.	NAME	TYPE	DESCRIPTION
1	DAT2	I/O/PP	DATE LINE(BIT2)
2	CD/DAT3	I/O/PP	CARD DETECT DATE LIN(BIT3)
3	CMD	PP	COMMAND RESPONSE
4	VDD	S	SUPPLY VOLTAGE
5	CLX	I	CLOCK
6	VSS	S	SUPPLY VOLTAGE GROUND
7	DATO	I/O/PP	DATE LINE(BIT0)
8	DAT1	I/O/PP	DATE LINE(DIT1)

5

GENERAL TOLERANCE	DONGGUAN BAOXUN PRECISION TECHNOLOGY CO., LTD				
DIM. TOL.	TITLE: MICRO SD CARD PUSH PUSH SMT 镀金 外焊				
X	DWG. NO.: TF03-TD9P			DRAWN: MAX	
X.X ±0.30	PART NO.: TF03-TD9P			CHECKED: ELLA	
X.XX ±0.25	UNIT: mm	SCALE: none	SHEET: 1 of 1	DWG. SIZE: A4	LAYER: bxconn
X.XXX ±0.15	APPROVED: WILL				
GENERAL ANGLE: ±3°					

**BXCONN**<sup>®</sup>

