

SOT-23 Plastic-Encapsulate ESD Protection Diodes

DESCRIPTION

The SM712 transient voltage suppressor (TVS) diode is designed for asymmetrical (12V to -7V) protection in multi-point data transmission standard RS-485 applications. The SM712 may be used to protect devices from transient voltages resulting from electrostatic discharge (ESD), electrical fast transients (EFT), and lightning.

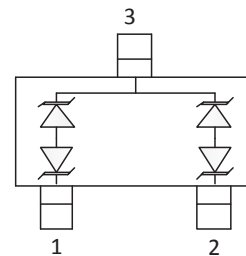
The SM712 features 400 Watts ($t_p=8/20\mu s$) of power handling capability to accommodate the higher transient voltage levels which may be expected in extended common mode applications. This provides higher equipment reliability and eliminates the “guess work” required when using zener diodes that are not rated to handle such transient conditions.

The integrated design aids in reducing voltage over-shoot associated with trace inductance. The low clamping voltage of the SM712 minimizes the stress on the protected transceiver. The SOT-23 package allows flexibility in the design of “crowded” circuit boards.

Features

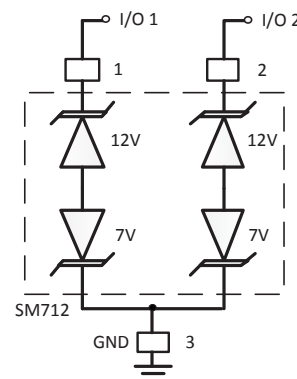
- ◆ 400 Watts Peak Pulse Power per (8/20 μs)
- ◆ Transient protection for asymmetrical data lines to
IEC61000-4-2 (ESD) $\pm 15kV$ (air), $\pm 8kV$ (contact)
IEC61000-4-4 (EFT) 40A (5/50ns)
IEC61000-4-5 (Lightning) 12A (8/20 μs)
- ◆ Protects two +12V to -7V lines
- ◆ Low capacitance
- ◆ Low leakage current
- ◆ Low clamping voltage
- ◆ Solid-state silicon avalanche technology
- ◆ Meets MSL 1 Requirements

Schematic & Pin Configuration



SOT23 (Top View)

Circuit Diagram



Applications

- ◆ Protection of RS-485 transceivers with extended common-mode range
- ◆ Security systems
- ◆ Automatic Teller Machines
- ◆ HFC systems
- ◆ Networks

Mechanical Characteristics

- ◆ Package: SOT-23
- ◆ Flammability Rating: UL 94V-0
- ◆ Terminal: Matte tin plated.
- ◆ High temperature soldering guaranteed: 260°C/10s
- ◆ Marking: 712 or C72
- ◆ Packaging: Tape and Reel

Absolute Maximum Ratings ($T_A=25^{\circ}\text{C}$ unless otherwise specified)

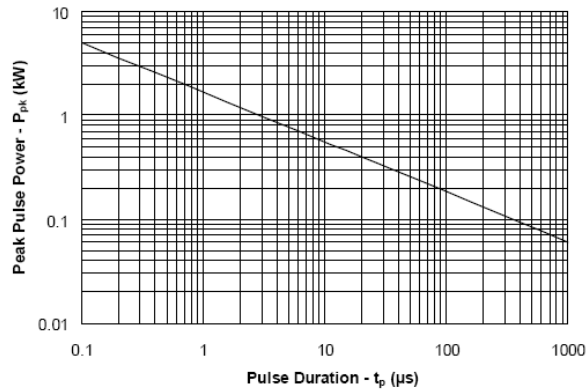
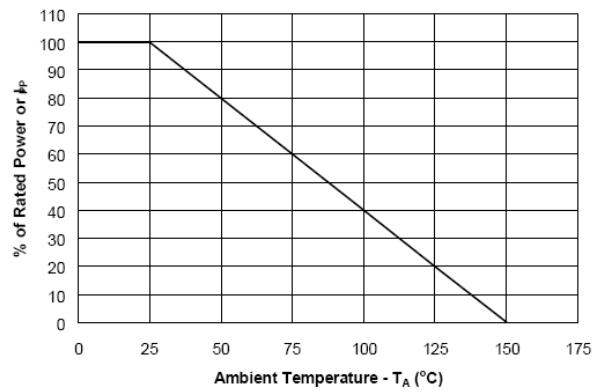
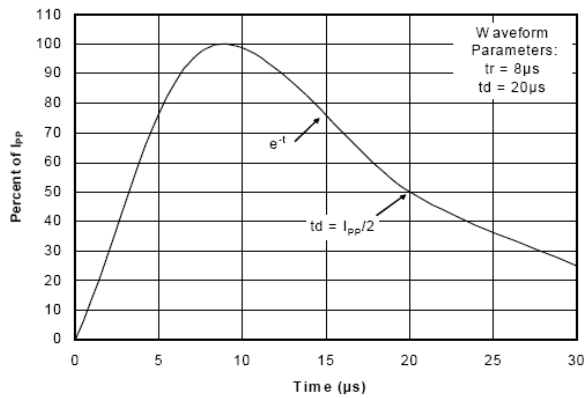
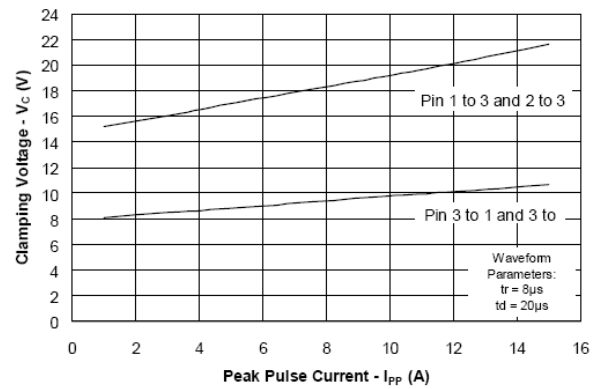
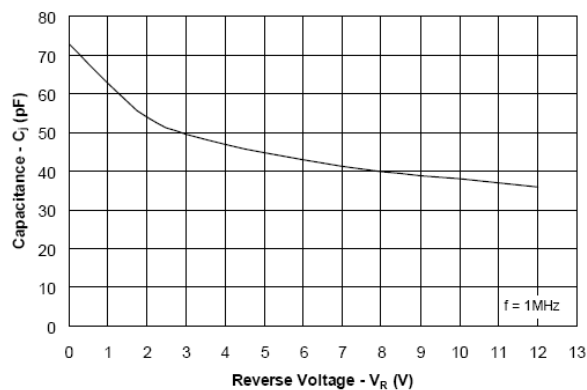
Parameter	Symbol	Value	Unit
Peak Pulse Power(8/20us)	P_{PP}	400	W
Peak Pulse Current(8/20us)	I_{PP}	17	A
ESD per IEC 61000-4-2 (Air) ESD per IEC 61000-4-2 (Contact)	V_{ESD}	± 15 ± 8	KV
Operating Temperature	T_{OPT}	-55 to +150	$^{\circ}\text{C}$
Storage Temperature	T_{STG}	-55 to +150	$^{\circ}\text{C}$
Lead Solder Temperature – Maximum (10 Second Duration)	T_L	260(10 sec.)	$^{\circ}\text{C}$

Electrical Characteristics ($T_A=25^{\circ}\text{C}$ unless otherwise specified)

Symbol	Parame	Test Condition	Pin 1 to 3 and Pin 2 to 3 (12V) TVS			Pin 3 to 1 and Pin 3 to 2 (7V TVS)			Units
			Min	Typ	Max	Min	Typ	Max	
V_{RWM}	Reverse Working Voltage	Pin 3 to 1 or Pin 2 to 1			12			7	V
V_{BR}	Reverse Breakdown Voltage	$I_T = 1\text{mA}$	13.3			7.5			V
I_R	Reverse Leakage Current	$V_R = V_{RWM}$			1			20	μA
V_{C1}	Clamping Voltage 1	$I_{PP} = 5\text{A}$, $t_p = 8/20\mu\text{s}$			20			12	V
V_{C2}	Clamping Voltage 2	$I_{PP} = 17\text{A}$, $t_p = 8/20\mu\text{s}$			26			16	V
C_{J1}	Junction Capacitance 1	$V_R = 0\text{V}$, $f = 1\text{MHz}$			75			75	pF
C_{J2}	Junction Capacitance 2	$V_R = V_{RWM}$, $f = 1\text{MHz}$		45			45		pF

The above data are for reference only.

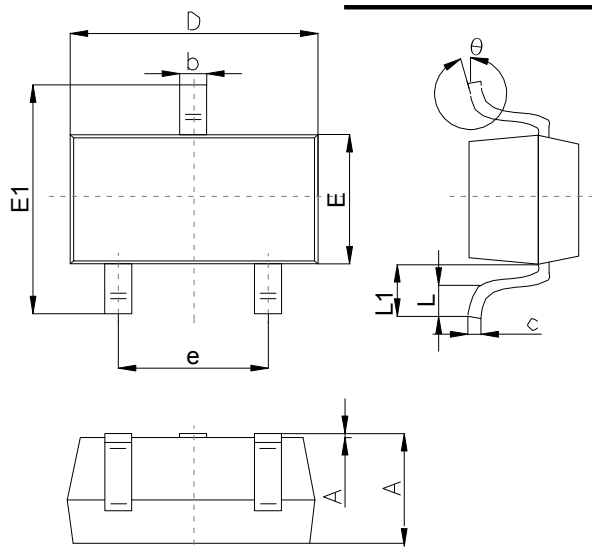
ELECTRICAL CHARACTERISTICS CURVE

Non-Repetitive Peak Pulse Power vs. Pulse Time

Power Derating Curve

Pulse Waveform

Clamping Voltage vs. Peak Pulse Current

Capacitance vs. Reverse Voltage


The curve above is for reference only.

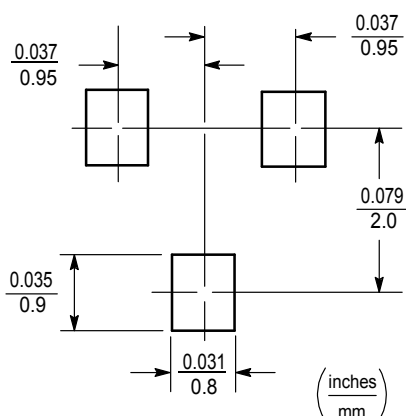
Outline Drawing

SOT-23 Package Outline Dimensions



Symbol	Dimensions In Millimeters		
	Min	Typ	Max
A	0.65		1.40
A1	0.00		0.20
b	0.30		0.55
c	0.08		0.20
D	2.70		3.10
E	1.15		1.65
E1	2.10		2.80
e	1.70		2.10
L	0.15		0.50
L1	0.35		0.70
θ	0°		12°

Suggested Pad Layout

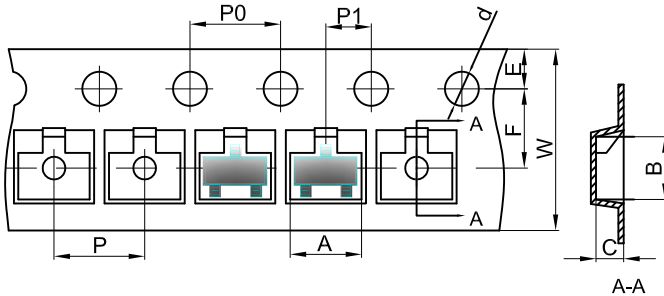


Note:

1. Controlling dimension:in/millimeters.
2. General tolerance: ±0.05mm.
3. The pad layout is for reference purposes only.

SOT-23 Tape and Reel

SOT-23 Embossed Carrier Tape

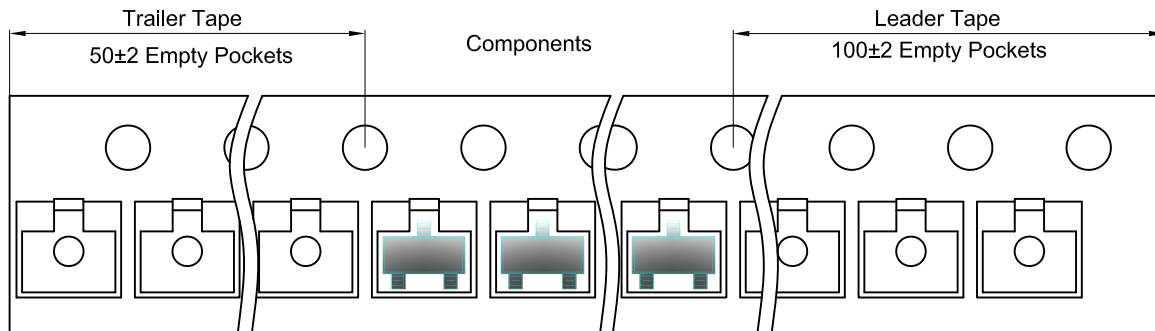


Packaging Description:

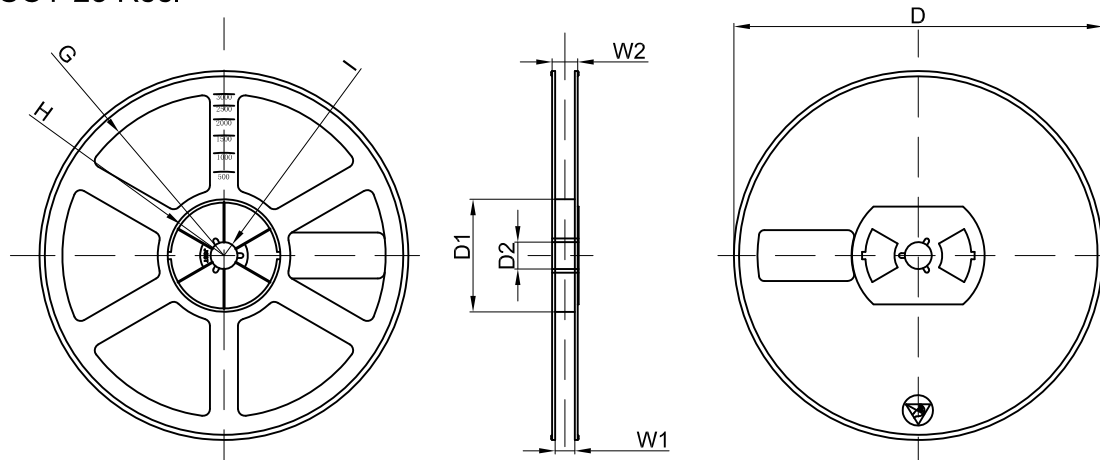
SOT-23 parts are shipped in tape. The carrier tape is made from a dissipative (carbon filled) polycarbonate resin. The cover tape is a multilayer film (Heat Activated Adhesive in nature) primarily composed of polyester film, adhesive layer, sealant, and anti-static sprayed agent. These reeled parts in standard option are shipped with 3,000 units per 7" or 17.8cm diameter reel. The reels are clear in color and is made of polystyrene plastic (anti-static coated).

Dimensions are in millimeter										
Pkg type	A	B	C	d	E	F	P0	P	P1	W
SOT-23	3.15	2.77	1.22	Ø1.50	1.75	3.50	4.00	4.00	2.00	8.00

SOT-23 Tape Leader and Trailer



SOT-23 Reel



Dimensions are in millimeter								
Reel Option	D	D1	D2	G	H	I	W1	W2
7"Dia	Ø178.00	54.40	13.00	R78.00	R25.60	R6.50	9.50	12.30

REEL	Reel Size	Box	Box Size(mm)	Carton	Carton Size(mm)	G.W.(kg)
3000 pcs	7 Inch	45,000 pcs	203×203×195	180,000 pcs	438×438×220	