

PC、POC系列

成品訂購碼

PC 6 01 □ □ - S

① ② ③ ④ ⑤ ⑥

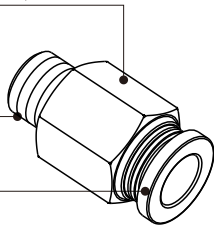
① 規格代號	② 接管口徑	③ 連接螺紋	④ 顏色代號	⑤ 牙型代號	⑥ 材質代號	
PC: 螺紋直通 	4: $\Phi 4$ mm 6: $\Phi 6$ mm 8: $\Phi 8$ mm 10: $\Phi 10$ mm 12: $\Phi 12$ mm	連接螺紋 M5: M5X0.8 01: PT1/8 02: PT1/4 03: PT3/8 04: PT1/2	適用接管口徑 $\Phi 4, \Phi 6$ $\Phi 4, \Phi 6$ $\Phi 8, \Phi 10$ $\Phi 12$	顏色代號 空白: 灰色 D: 黑色 顏色定義 接口: 灰色 接口: 黑色	空白: PT牙	S: 不銹鋼304

產品規格

使用壓力範圍	0~10kgf/cm ² (0~1.0MPa)
負壓	-750mmHg(10Torr)
保證耐壓力	1.5MPa
使用溫度範圍(°C)	-20~70
適用軟管	尼龍軟管或PU管
顏色	灰色/黑色

產品特性

- 1、本體材質為不銹鋼304，且所有材料均不含銅，
可用于禁銅環境；
- 2、螺紋部分塗有密封劑，M5公制
螺紋附密封墊片，確保螺紋連
接部份無泄漏；
- 3、塑膠接口部份顏色有灰色與黑色可選，
方便您整體配管需求。

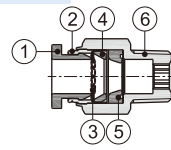


接口端螺紋與插管端內徑配置表

產品系列	螺紋規格	插管口徑				
		$\Phi 4$	$\Phi 6$	$\Phi 8$	$\Phi 10$	$\Phi 12$
PC	M5	●	●			
	PT1/8	●	●	●	●	●
	PT1/4	●	●	●	●	●
	PT3/8		●	●	●	●
	PT1/2		●	●	●	●
POC	M5	●	●			
	PT1/8	●	●	●	●	●
	PT1/4	●	●	●	●	●
	PT3/8		●	●	●	●
	PT1/2		●	●	●	●

內部結構

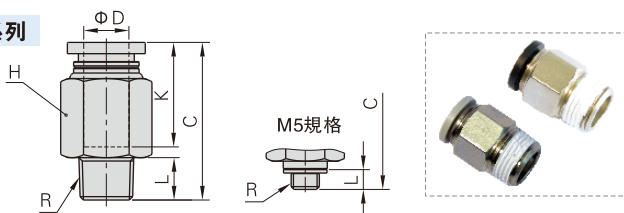
PC系列



序號	名稱	材質	序號	名稱	材質
1	塑膠接口	POM	4	定位座	POM
2	定位環	鋁合金	5	異型O令	NBR
3	彈簧墊片	不銹鋼	6	本體	不銹鋼304

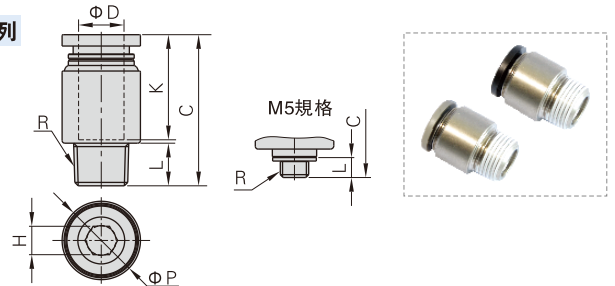
外部規格

PC系列



型號符號	ΦD	R	L	C	K	對邊H	重量(g)
PC4M5-S	4	M5×0.8	3.5	19.5	14	9	6
PC401-S		PT1/8	7.5	19.5	14	10	6.5
PC402-S		PT1/4	10	19.5	14	14	12.5
PC6M5-S	6	M5×0.8	3.5	22.5	16.5	12	8
PC601-S		PT1/8	7.5	22.0	18.5	12	7
PC602-S		PT1/4	10	24.5	18.5	14	14.5
PC603-S		PT3/8	11	22.5	18.5	17	22
PC604-S	PT1/2	14	26.0	18.5	21	42	
PC801-S	8	PT1/8	7.5	28	18.5	14	12.5
PC802-S		PT1/4	10	27	18.5	14	12
PC803-S		PT3/8	11	23.5	18.5	17	19.5
PC804-S		PT1/2	14	27	18.5	21	40
PC1001-S	10	PT1/8	7.5	30	21	17	19
PC1002-S		PT1/4	10	32.5	21	17	22
PC1003-S		PT3/8	11	28	21	17	19
PC1004-S	PT1/2	14	26.5	21	21	33	
PC1201-S	12	PT1/8	7.5	32.5	23	21	35.5
PC1202-S		PT1/4	10	35	23	21	37.5
PC1203-S		PT3/8	11	30.5	23	21	26.5
PC1204-S		PT1/2	14	32.5	23	21	38.5

POC系列



型號符號	ΦD	R	ΦP	L	C	K	對邊H	重量(g)
POC4M5-S	4	M5×0.8	9	3.5	18.5	14	2.5	3.5
POC401-S		PT1/8	10	7.5	18	14	3	5
POC402-S		PT1/4	14	10	19.5	14	3	11.5
POC6M5-S	6	M5×0.8	12	3.5	21.5	16.5	2.5	5.5
POC601-S		PT1/8	12	7.5	22.0	18.5	4	6
POC602-S		PT1/4	14	10	22.0	18.5	4	11
POC603-S		PT3/8	14	7.5	26.5	18	5	9
POC604-S	8	PT1/4	14	10	25	18	6	9.5
POC802-S		PT3/8	17	11	23.5	18	6	18
POC803-S		PT1/8	17	7.5	30	21	5	15.5
POC1001-S	10	PT1/4	17	10	29	21	6	14.5
POC1002-S		PT3/8	17	11	28	21	8	17.5
POC1003-S		PT1/2	21	14	26.5	21	8	32.5
POC1202-S	12	PT1/4	21	10	34.5	23	6	30
POC1203-S		PT3/8	21	11	30	23	8	23
POC1204-S		PT1/2	21	14	32	23	8	34.5

插管—螺紋類

成品訂購碼

PL 6 01 □ □ - S

① ② ③ ④ ⑤ ⑥

① 規格代號	② 接管口徑	③ 連接螺紋	④ 顏色代號	⑤ 牙型代號	⑥ 材質代號
PHW: F型螺紋可旋三通 	PZB: 十字螺紋四通 	連接螺紋 適用接管口徑	顏色代號 顏色定義	空白: PT牙	S: 不銹鋼304
PHF: 串聯肘節 	PL: L型螺紋二通 	M5: M5X0.8 Φ4, Φ6	空白: 灰色 接口: 灰色 本體: 灰色		
PEB: T型正螺紋三通 	PLL: L型加長螺紋二通 	4: Φ4mm 6: Φ6mm 8: Φ8mm 10: Φ10mm 12: Φ12mm	D: 黑色 接口: 黑色 本體: 黑色		
PED: T型側螺紋三通 	PH: 外六角肘節 	01: PT1/8 02: PT1/4 03: PT3/8 04: PT1/2			
PYB: Y型螺紋三通 					

PKD 6 - 4 01 □ □ - S

① ② ③ ④ ⑤ ⑥ ⑦

① 規格代號	② 接管口徑	③ 接管口徑	④ 連接螺紋	⑤ 顏色代號	⑥ 牙型代號	⑦ 材質代號
PKD: 減徑螺紋五通 	6: Φ6mm 8: Φ8mm 10: Φ10mm	4: Φ4mm 6: Φ6mm 8: Φ8mm	01: PT1/8 02: PT1/4 03: PT3/8	顏色代號 顏色定義 空白: 灰色 接口: 灰色 本體: 灰色 D: 黑色 接口: 黑色 本體: 黑色	空白: PT牙	S: 不銹鋼304

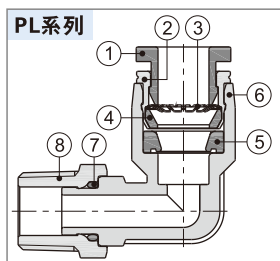
產品特性

- 1、不銹鋼304材質產品適合禁銅環境；
- 2、具有多種型號規格，廣泛應用於各類氣動系統；
- 3、流通性能優越，可通過與氣管內徑同容量之流量；
- 4、拔插接管簡單方便快捷，與氣管連接部份安全可靠又耐用；
- 5、螺紋部分塗有密封劑，M5公制螺紋附密封墊片，確保螺紋連接部份無洩漏。

產品規格

使用壓力範圍	0~10kgf/cm ² (0~1.0MPa)
負壓	-750mmHg(10Torr)
保證耐壓力	1.5MPa
使用溫度範圍(°C)	-20~70
適用軟管	尼龍軟管或PU管
顏色	灰色/黑色

內部結構



序號	名稱	材質
1	塑膠接口	POM
2	定位環	鋁合金
3	彈簧墊片	不銹鋼
4	定位座	POM
5	異型O令	NBR
6	本體	PBT
7	O型環	NBR
8	轉換接頭	SUS304

接口端螺紋與插管端內徑配置表

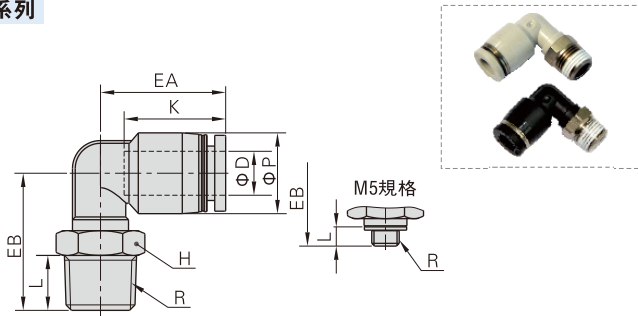
產品系列	螺紋規格	插管口徑				
		Φ4	Φ6	Φ8	Φ10	Φ12
PL	M5	●	●			
	PT1/8	●	●	●	●	●
	PT1/4	●	●	●	●	●
	PT3/8	●	●	●	●	●
	PT1/2		●	●	●	●
PLL	M5	●	●			
	PT1/8	●	●	●	●	
	PT1/4	●	●	●	●	●
	PT3/8		●	●	●	●
	PT1/2			●	●	●
PEB PED PYB	M5	●	●			
	PT1/8	●	●	●	●	
	PT1/4	●	●	●	●	●
	PT3/8		●	●	●	●
	PT1/2			●	●	●
PH PHF	M5	●	●			
	PT1/8	●	●	●		
	PT1/4		●	●	●	
	PT3/8		●	●	●	●
	PT1/2			●	●	●
PHW	PT1/8	●	●	●		
	PT1/4		●	●	●	
	PT3/8		●	●	●	●
PZB	PT1/8		●	●		
	PT1/4		●	●	●	
	PT3/8		●	●	●	●
	PT1/2			●	●	●

產品系列	螺紋規格	插管口徑		
		Φ6-Φ4	Φ8-Φ6	Φ10-Φ8
PKD	PT1/8	●		
	PT1/4		●	
	PT3/8			●

插管—螺紋類

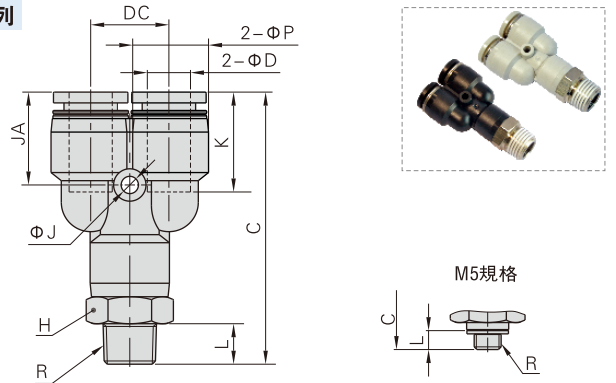
外部規格

PL系列



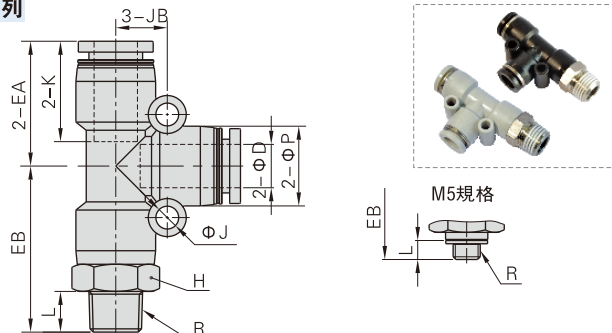
型號符號	ΦD	R	ΦP	L	K	EA	EB	對邊H	重量(g)
PL4M5-S	4	M5×0.8	9	3.5	14	17	15	8	3
PL401-S		PT1/8	9	7.5	14	17	18.5	10	4.5
PL402-S		PT1/4	9	10	14	17	22.0	14	11
PL6M5-S	6	M5×0.8	12.5	3.5	17	20	17.0	8	4.5
PL601-S		PT1/8	12.5	7.5	17	20	20.5	10	6
PL602-S		PT1/4	12.5	10	17	20	24.0	14	12.5
PL603-S	6	PT3/8	12.5	11	17	20	25.5	17	19
PL604-S		PT1/2	12.5	14	17	20	30.0	21	33
PL801-S		PT1/8	15	7.5	18.5	23	20.5	10	7
PL802-S	8	PT1/4	15	10	18.5	23	25.0	14	12
PL803-S		PT3/8	15	11	18.5	23	26.5	17	19.5
PL804-S		PT1/2	15	14	18.5	23	31.0	21	33
PL1001-S	10	PT1/8	18	7.5	21	25.5	25.0	17	15.5
PL1002-S		PT1/4	18	10	21	25.5	27.0	17	18
PL1003-S		PT3/8	18	11	21	25.5	28.0	17	20
PL1004-S	10	PT1/2	18	14	21	25.5	32.5	21	34.5
PL1201-S		PT1/8	21	7.5	23	28.5	26.5	17	18
PL1202-S		12	PT1/4	21	10	23	28.5	28.5	17
PL1203-S	PT3/8		21	11	23	29.5	33	17	24
PL1204-S	PT1/2		21	14	23	29.5	34	21	34.5

PYB系列



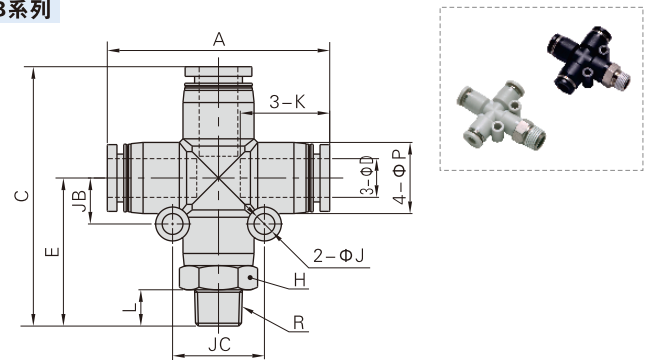
型號符號	ΦD	R	ΦP	L	C	K	ΦJ	JA	DC	對邊H	重量(g)	
PYB4M5-S	4	M5×0.8	9	3.5	35.5	14	3.2	13	10	9	6.5	
PYB401-S		PT1/8	9	7.5	39.5	14	3.2	13	10	10	8.5	
PYB402-S		PT1/4	9	10	42.5	14	3.2	13	10	14	10	
PYB6M5-S	6	M5×0.8	12.5	3.5	40.5	16.5	3.2	15.5	12	12	10.5	
PYB601-S		PT1/8	12.5	7.5	44.5	16.5	3.2	15.5	12	12	13	
PYB602-S		PT1/4	12.5	10	47.5	16.5	3.2	15.5	12	14	17	
PYB603-S	6	PT3/8	12.5	11	49.0	16.5	3.2	15.5	12	17	23.5	
PYB801-S		PT1/8	15	7.5	50	18.5	3.2	17	14.5	14	19	
PYB802-S		8	PT1/4	15	10	52.5	18.5	3.2	17	14.5	14	21
PYB803-S	PT3/8		15	11	54	18.5	3.2	17	14.5	17	26	
PYB804-S	PT1/2		15	14	58	18.5	3.2	17	14.5	21	38	
PYB1001-S	10	PT1/8	18	7.5	56.5	21	4.3	19.5	18	17	26	
PYB1002-S		PT1/4	18	10	59	21	4.3	19.5	18	17	28	
PYB1003-S		PT3/8	18	11	60	21	4.3	19.5	18	17	31	
PYB1004-S	10	PT1/2	18	14	64	21	4.3	19.5	18	21	42.5	
PYB1202-S		12	PT1/4	21	10	66	23	4.3	21	20.5	21	26.5
PYB1203-S			PT3/8	21	11	67	23	4.3	21	20.5	21	49
PYB1204-S	PT1/2		21	14	70	23	4.3	21	20.5	21	53.5	

PED系列



型號符號	ΦD	R	ΦP	K	L	EA	EB	ΦJ	JB	對邊H	重量(g)	
PED4M5-S	4	M5×0.8	9	14	3.5	17	21	3.2	6.5	9	6.5	
PED401-S		PT1/8	9	14	7.5	17	25	3.2	6.5	10	8.5	
PED402-S		PT1/4	9	14	10	17	28	3.2	6.5	14	14.5	
PED6M5-S	6	M5×0.8	12.5	16.5	3.5	20	23.5	3.2	8	12	10.5	
PED601-S		PT1/8	12.5	16.5	7.5	20	27.5	3.2	8	14	13	
PED602-S		PT1/4	12.5	16.5	10	20	30.5	3.2	8	17	17.5	
PED603-S	6	PT3/8	12.5	16.5	11	20	32	3.2	8	17	23.5	
PED801-S		PT1/8	15	18.5	7.5	23	30.5	4.3	9.5	14	17.5	
PED802-S		8	PT1/4	15	18.5	10	23	33	4.3	9.5	14	20
PED803-S	PT3/8		15	18.5	11	23	34.5	4.3	9.5	17	26.5	
PED804-S	PT1/2		15	18.5	14	23	38.5	4.3	9.5	21	38	
PED1001-S	10	PT1/8	18	21	7.5	26.5	34	4.3	11	17	25.5	
PED1002-S		PT1/4	18	21	10	26.5	36.5	4.3	11	17	27.5	
PED1003-S		PT3/8	18	21	11	26.5	37.5	4.3	11	17	30	
PED1004-S	10	PT1/2	18	21	14	26.5	41.5	4.3	11	21	42.5	
PED1202-S		12	PT1/4	21	23	10	30	41	4.3	13	21	47
PED1203-S			PT3/8	21	23	11	30	42	4.3	13	21	48.5
PED1204-S	PT1/2		21	23	14	30	45	4.3	13	21	54	

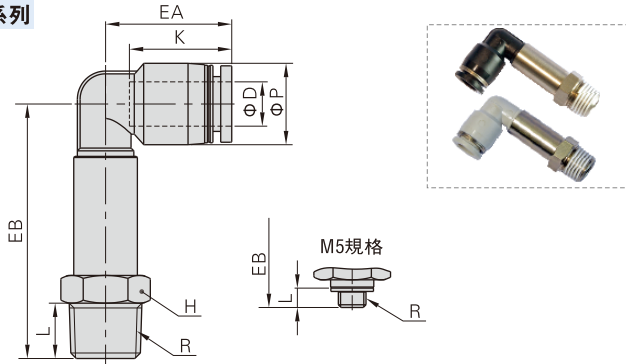
PZB系列



型號符號	ΦD	R	L	A	E	C	K	ΦP	ΦJ	JB	JC	對邊H	重量(g)	
PZB601-S	6	PT1/8	7.5		27.5	47.5						12	14.5	
PZB602-S		PT1/4	10	39.5	30.5	50.5	16.5	12.5	3.2	8	16	14	19.5	
PZB603-S		PT3/8	11		32	52							17	25.5
PZB801-S	8	PT1/8	7.5		30.5	53.5						14	20	
PZB802-S		PT1/4	10	46	33	56	18.5	15	4.3	9.5	19	14	22.5	
PZB803-S		PT3/8	11		34.5	57.5							17	28
PZB804-S	8	PT1/2	14		38.5	61.5						21	40.5	
PZB1002-S		10	PT1/4	10		36.5	63						17	32
PZB1003-S			PT3/8	11	52.5	37.5	64	21	18	4.3	11	22	17	35
PZB1004-S	PT1/2		14		41.5	68							21	46.5
PZB1203-S	12	PT3/8	11		42	72						21	53.5	
PZB1204-S		PT1/2	14	59.5	45	75	23	21	4.3	13	26	21	62	

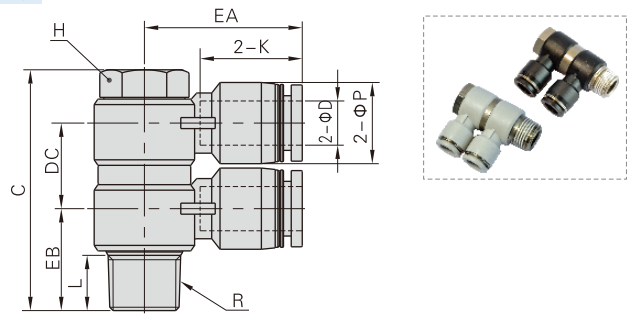
插管—螺紋類

PLL系列



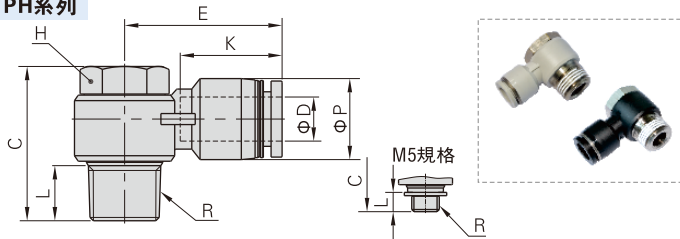
型號符號	ΦD	R	ΦP	K	L	EA	EB	對邊H	重量(g)
PLL4M5-S	4	M5×0.8	9	14	3.5	17	32.5	8	8
PLL401-S		PT1/8	9	14	7.5	17	35.5	10	11.5
PLL402-S		PT1/4	9	14	10	17	38.5	14	15.5
PLL6M5-S	6	M5×0.8	12.5	17	3.5	20	34.5	8	9.5
PLL601-S		PT1/8	12.5	17	7.5	20	37.5	10	12
PLL602-S		PT1/4	12.5	17	10	20	40.5	14	16.5
PLL603-S	8	PT3/8	12.5	17	11	20	43	17	21.5
PLL801-S		PT1/8	15	18.5	7.5	23	43.5	12	15.5
PLL802-S		PT1/4	15	18.5	10	23	45.5	14	21
PLL803-S	10	PT3/8	15	18.5	11	23	48	17	25.5
PLL1001-S		PT1/8	18	21	7.5	25.5	50.5	15	35
PLL1002-S		PT1/4	18	21	10	25.5	53.5	15	37.5
PLL1003-S	12	PT3/8	18	21	11	25.5	54.5	17	38
PLL1004-S		PT1/2	18	21	14	25.5	59	21	44
PLL1202-S		PT1/4	21	23	10	28.5	55.5	15	40
PLL1203-S	12	PT3/8	21	23	11	29.5	60	17	51.5
PLL1204-S		PT1/2	21	23	14	29.5	63	21	52.5

PHW系列



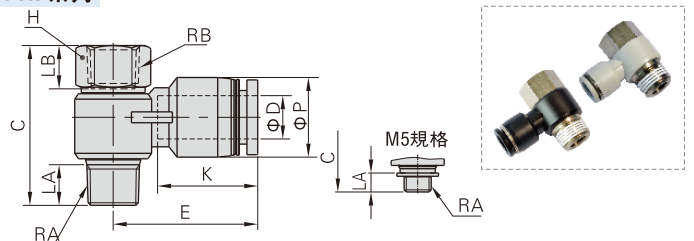
型號符號	ΦD	R	ΦP	L	C	K	EA	EB	DC	對邊H	重量(g)
PHW401-S	4	PT1/8	9	7.5	38	14	20.5	14.5	13	11	17.5
PHW601-S		PT1/8	12.5	7.5	38	16.5	23.0	15	13	11	19.5
PHW602-S	6	PT1/4	12.5	10	43.5	16.5	25.0	17.5	15.5	14	37.5
PHW603-S		PT3/8	12.5	11	50	16.5	27.0	20	16.5	19	64
PHW801-S	8	PT1/8	15	7.5	40.5	18.5	26.5	16.5	15.5	11	22.5
PHW802-S		PT1/4	15	10	43.5	18.5	28.5	18.5	15.5	14	38
PHW803-S		PT3/8	15	11	50	18.5	29.5	20	16.5	19	65
PHW804-S	10	PT1/2	15	14	61	18.5	32	24.5	22	24	133.5
PHW1002-S		PT1/4	18	10	46.5	21	31	20	18.5	14	44
PHW1003-S	10	PT3/8	18	11	55	21	33	21	22	19	81.5
PHW1004-S		PT1/2	18	14	61	21	35.5	25	22	24	127.5
PHW1203-S	12	PT3/8	21	11	55	23	36	23	22	19	80.5
PHW1204-S		PT1/2	21	14	61	23	38	26.5	22	24	137.5

PH系列



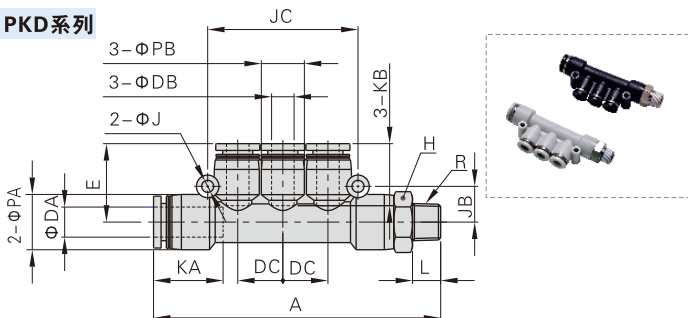
型號符號	ΦD	R	ΦP	L	C	K	E	對邊H	重量(g)
PH4M5-S	4	M5×0.8	9	3.5	17	14	19	8	5.5
PH401-S		PT1/8	9	7.5	25	14	20.5	11	12
PH6M5-S	6	M5×0.8	12.5	3.5	17	16.5	23.5	8	6.5
PH601-S		PT1/8	12.5	7.5	25	16.5	23	11	13
PH602-S		PT1/4	12.5	10	28	16.5	25	14	23.5
PH603-S	8	PT3/8	12.5	11	33	16.5	27	19	46.5
PH801-S		PT1/8	15	7.5	25	18.5	26.5	11	14
PH802-S		PT1/4	15	10	28	18.5	28.5	14	24.5
PH803-S	10	PT3/8	15	11	33	18.5	29.5	19	45.5
PH804-S		PT1/2	15	14	39	18.5	32	24	82
PH1002-S	10	PT1/4	18	10	28	21	31	14	26
PH1003-S		PT3/8	18	11	33	21	33	19	47.5
PH1004-S		PT1/2	18	14	39	21	35.5	24	81.5
PH1203-S	12	PT3/8	21	11	33	23	36	19	49.5
PH1204-S		PT1/2	21	14	39	23	38	24	86

PHF系列



型號符號	ΦD	RA	RB	ΦP	LA	LB	C	K	E	對邊H	重量(g)
PHF4M5-S	4	M5×0.8	M5×0.8	9	3.5	6	20	14	19	8	6
PHF401-S		PT1/8	PT1/8	9	7.5	8	29.5	14	20.5	12	12
PHF6M5-S	6	M5×0.8	M5×0.8	12.5	3.5	6	20	16.5	23.5	8	7
PHF601-S		PT1/8	PT1/8	12.5	7.5	8	29.5	16.5	23	12	13
PHF602-S		PT1/4	PT1/4	12.5	10	11	35	16.5	25	17	28
PHF603-S	8	PT3/8	PT3/8	12.5	11	12	40	16.5	27	19	41
PHF801-S		PT1/8	PT1/8	15	7.5	8	29.5	18.5	26.5	12	14
PHF802-S		PT1/4	PT1/4	15	10	11	35	18.5	28.5	17	28.5
PHF803-S	10	PT3/8	PT3/8	15	11	12	40	18.5	29.5	19	41.5
PHF804-S		PT1/2	PT1/2	15	14	13.5	47.5	18.5	32	24	78
PHF1002-S	10	PT1/4	PT1/4	18	10	11	35	21	31	17	30
PHF1003-S		PT3/8	PT3/8	18	11	12	40	21	33	19	43
PHF1004-S		PT1/2	PT1/2	18	14	13.5	47.5	21	35.5	24	79.5
PHF1203-S	12	PT3/8	PT3/8	21	11	12	40	23	36	19	45
PHF1204-S		PT1/2	PT1/2	21	14	13.5	47.5	23	38	24	83

PKD系列

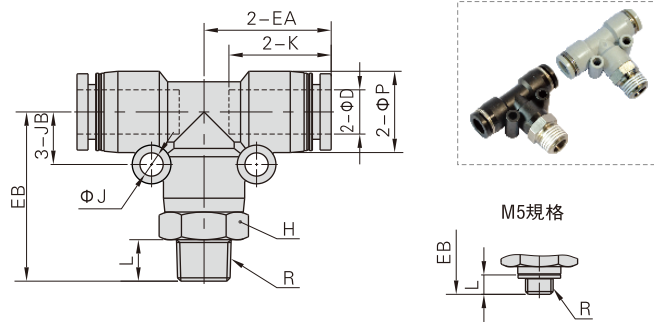


型號符號	ΦDA	ΦDB	R	L	A	ΦPA	ΦPB	KA
PKD6-401-S	6	4	PT1/8	7.5	66.5	12.5	9	16.5
PKD8-602-S	8	6	PT1/4	10	79	15	12.5	18.5
PKD10-803-S	10	8	PT3/8	11	91.5	18	15	21

型號符號	KB	ΦJ	JB	JC	DC	E	對邊H	重量(g)
PKD6-401-S	14	3.2	8	34	10	17.5	12	15
PKD8-602-S	16.5	3.2	9.5	40	12	21	14	25.5
PKD10-803-S	18.5	4.3	11	48	14.5	24	17	36.5

插管—螺紋類

PEB系列



型號符號	φD	R	φP	L	K	EA	EB	φJ	JB	對邊H	重量(g)
PEB4M5-S	4	M5×0.8	9	3.5	14	17	21	3.2	6.5	9	6.5
PEB401-S		PT1/8	9	7.5	14	17	25	3.2	6.5	10	8.5
PEB402-S		PT1/4	9	10	14	17	28	3.2	6.5	14	14.5
PEB6M5-S	6	M5×0.8	12.5	3.5	16.5	20	23.5	3.2	8	12	10.5
PEB601-S		PT1/8	12.5	7.5	16.5	20	27.5	3.2	8	12	13
PEB602-S		PT1/4	12.5	10	16.5	20	30.5	3.2	8	14	17.5
PEB603-S	8	PT3/8	12.5	11	16.5	20	32	3.2	8	17	23.5
PEB801-S		PT1/8	15	7.5	18.5	23	30.5	4.3	9.5	14	17.5
PEB802-S		PT1/4	15	10	18.5	23	33	4.3	9.5	14	20
PEB803-S	10	PT3/8	15	11	18.5	23	34.5	4.3	9.5	17	26.5
PEB804-S		PT1/2	15	14	18.5	23	38.5	4.3	9.5	21	38
PEB1001-S	12	PT1/8	18	7.5	21	26.5	34	4.3	11	17	25.5
PEB1002-S		PT1/4	18	10	21	26.5	36.5	4.3	11	17	27.5
PEB1003-S		PT3/8	18	11	21	26.5	37.5	4.3	11	17	30
PEB1004-S		PT1/2	18	14	21	26.5	41.5	4.3	11	21	42.5
PEB1202-S	12	PT1/4	21	10	23	30	41	4.3	13	21	47
PEB1203-S		PT3/8	21	11	23	30	42	4.3	13	21	48.5
PEB1204-S		PT1/2	21	14	23	30	45	4.3	13	21	54