

# Customer Information Sheet

DRAWING No.: S0971-46R

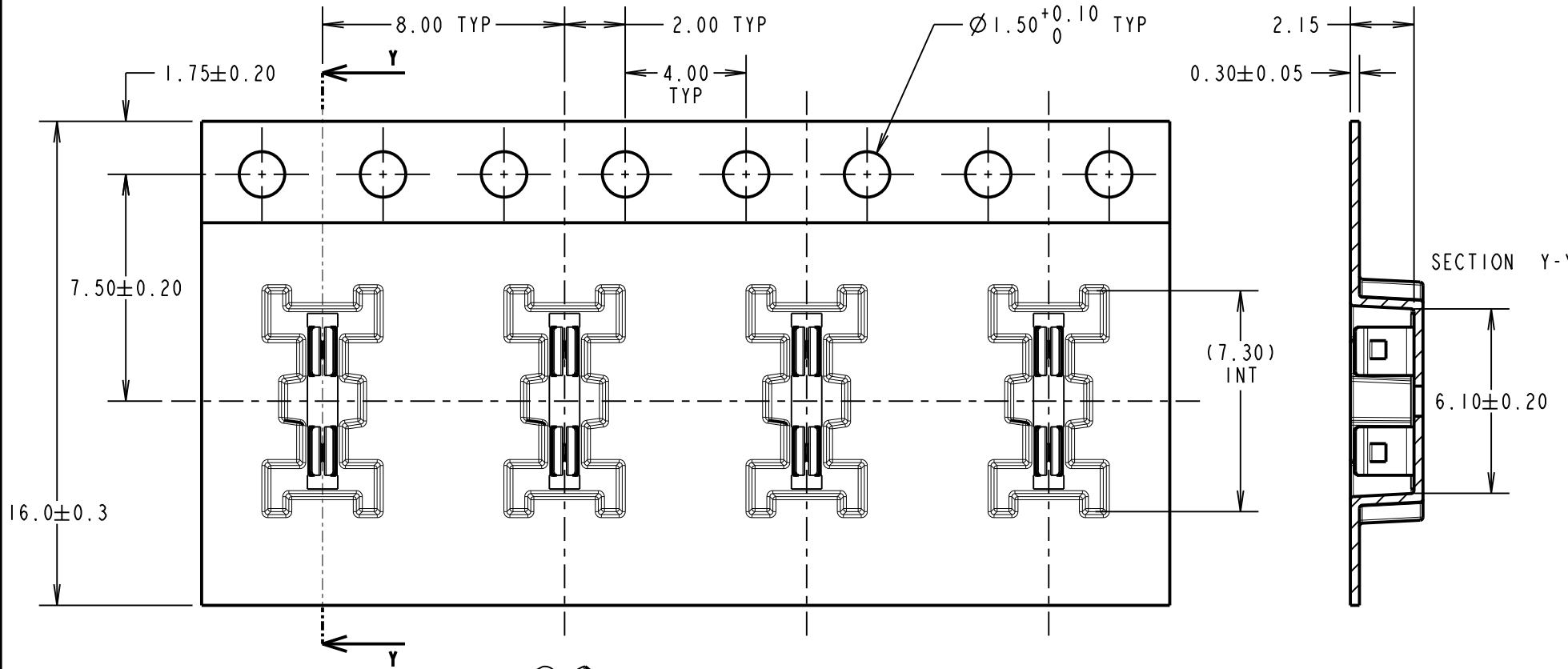
IF IN DOUBT - ASK

©

NOT TO SCALE

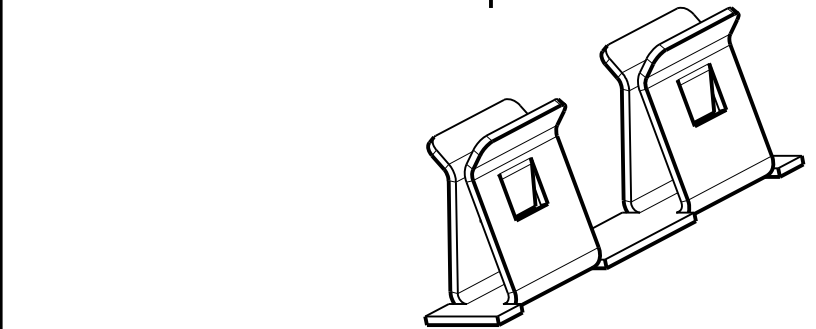
THIRD ANGLE PROJECTION

ALL DIMENSIONS IN mm

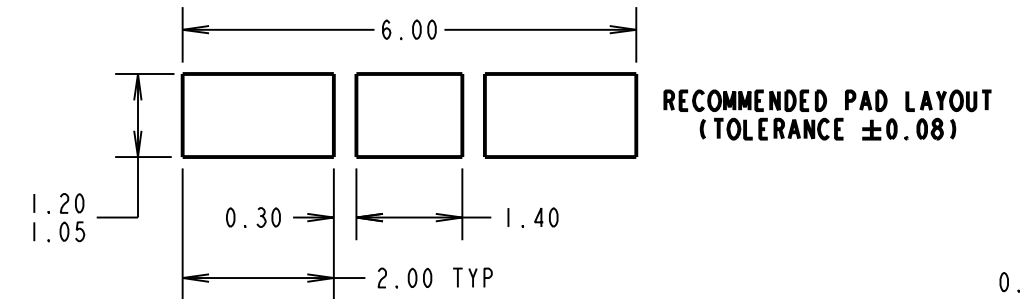
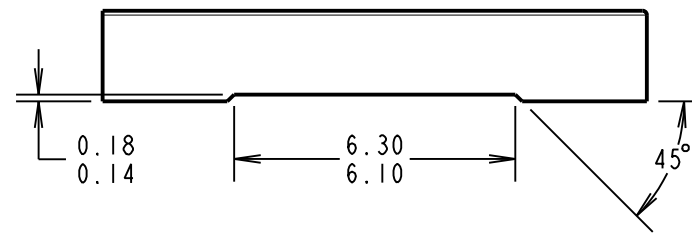


**SPECIFICATION:**  
**MATERIAL:**  
 CONTACT = STAINLESS STEEL  
**FINISH:**  
 2.0µm - 3.0µm TIN OVER 0.4µm - 1.2µm NICKEL.  
**ELECTRICAL:**  
 RESISTANCE = 100mΩ MAX  
**MECHANICAL:**  
 INSERTION FORCE = 19.6N MAX  
 WITHDRAWAL FORCE = 0.98N MIN  
 DURABILITY = 10 CYCLES  
**ENVIRONMENTAL:**  
 OPERATING TEMPERATURE = -25°C TO +150°C  
 STORAGE TEMPERATURE = -40°C TO +85°C  
**PACKAGING:**  
 5,000 PARTS IN TAPE & REEL, 9 REELS PACKED IN BOX.

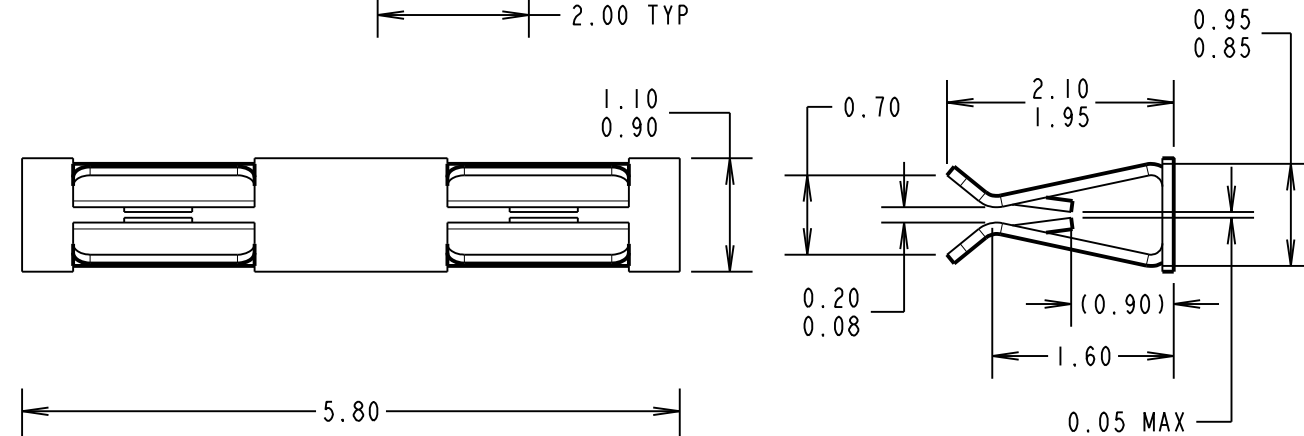
**NOTES:**  
 1. MAXIMUM PERMISSIBLE BURR IS 0.03mm MAX.  
 2. FOR USE WITH 0.20 - 0.30mm THICK SHIELD CANS.



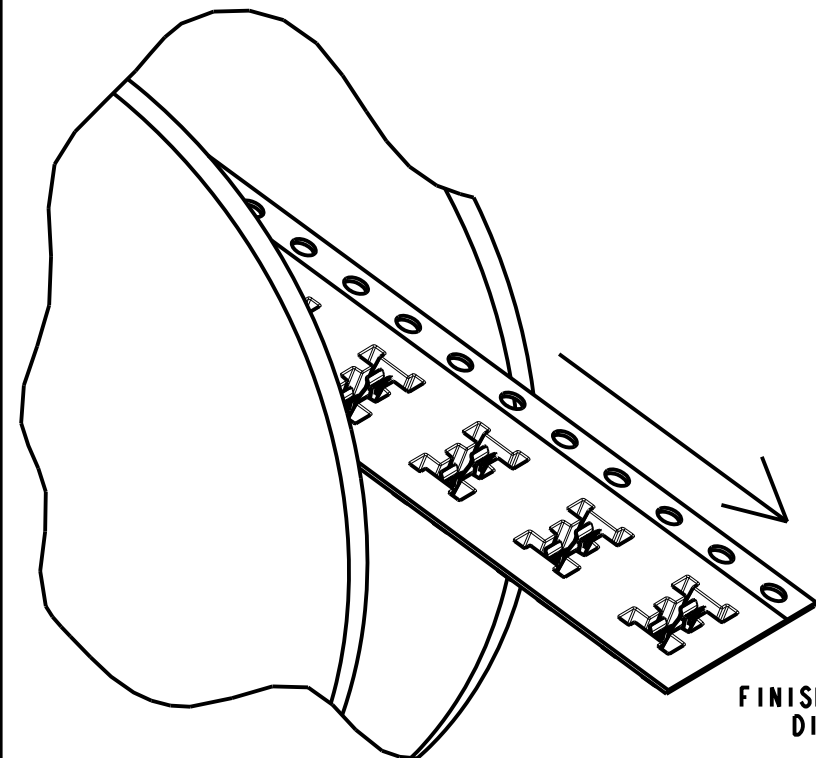
RECOMMENDED SHIELD CAN CUT OUT



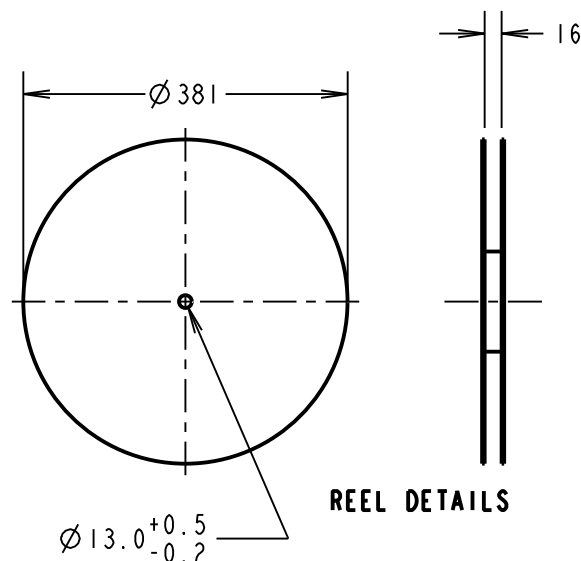
RECOMMENDED PAD LAYOUT  
(TOLERANCE ±0.08)



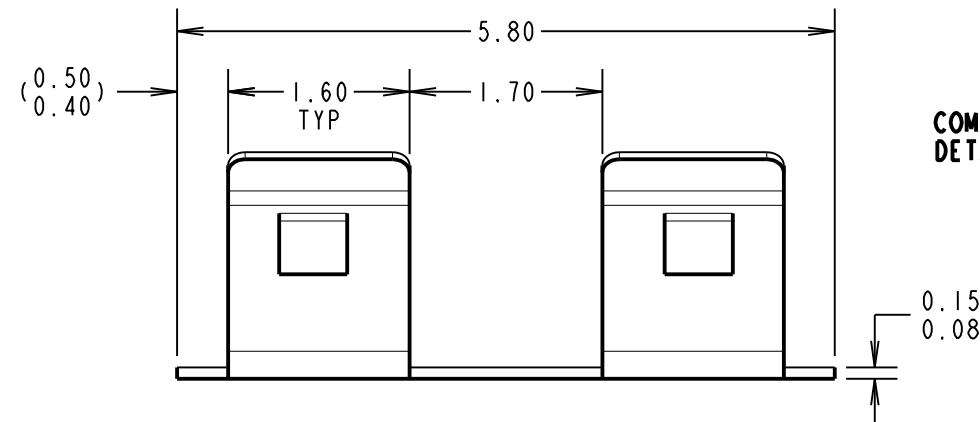
COMPONENT DETAILS



FINISHED REELING DIRECTION



REEL DETAILS



**HARWIN**

www.harwin.com  
 technical@harwin.com

THIS DRAWING AND ANY INFORMATION OR DESCRIPTIVE MATTER SET OUT HEREON ARE CONFIDENTIAL AND COPYRIGHT PROPERTY OF THE HARWIN GROUP AND MUST NOT BE DISCLOSED, LOANED, COPIED OR USED FOR MANUFACTURING, TENDERING OR FOR ANY OTHER PURPOSE WITHOUT THEIR WRITTEN PERMISSION.

**TOLERANCES**

X. = ±1mm  
 X.X = ±0.50mm  
 X.XX = ±0.10mm  
 X.XXX = ±0.01mm  
 ANGLES = ±5°  
 UNLESS STATED

**MATERIAL:**

STAINLESS STEEL

FINISH: SEE ABOVE

S/AREA: mm<sup>2</sup>

**TITLE:**

SURFACE MOUNT RFI SHIELD CLIP IN TAPE AND REEL

DRAWING NUMBER:

S0971-46R

FM	4	19.09.18	21491
NAME	ISS.	DATE	C/NOTE
APPROVED:		F.MCGOWAN	
CHECKED:		S.BENNETT	
DRAWN:		S.BENNETT	
CUSTOMER REF.:			
ASSEMBLY DRG:			