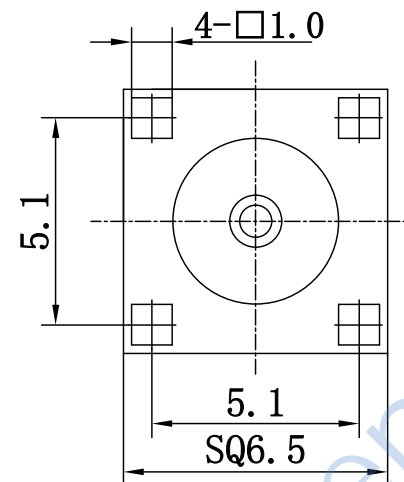
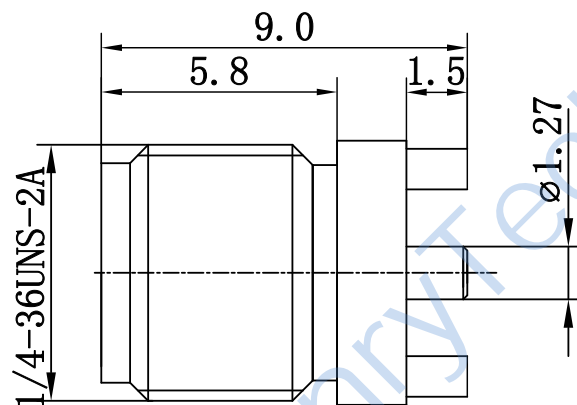


This document contains proprietary information and such information may not be disclosed to others for any purposes,
not used for sales/marketing/procurement purposes without written permission

REV	DESCRIPTION OF REVISION	ECN NO.	BY	DATE	APPROVED
A	Initial Release	—	H.wei	19/03/17	19/03/17



1 Electrical

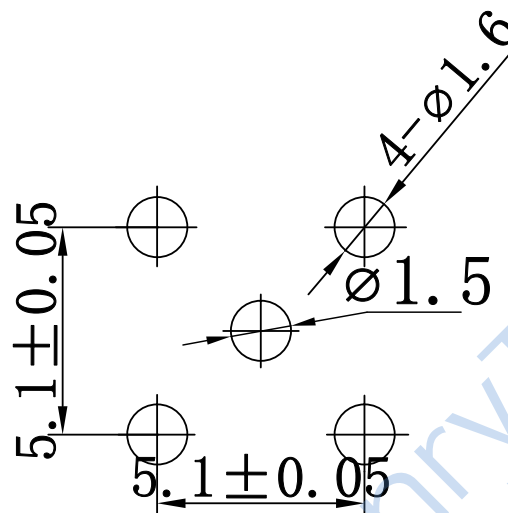
- 1.1 Impedance: 50 Ω
- 1.2 Frequency: DC-18GHz
- 1.3 VSWR: ≤ 1.30
- 1.4 Insulation resistance: $\geq 5000 M\Omega$
- 1.5 Dielectric strength: 1000V
- 1.6 Center contact $\leq 3.0 m\Omega$
- 1.7 Outer contact $\leq 2.0 m\Omega$

2 Environmental&Mechanical

- 2.1 Temperature range: -55°C~+125°C
- 2.2 RoHS Compliant
- 2.3 Durability: >500 cycles

3 Materials&Finish

- 3.1 Body: Brass, Gold plated
- 3.2 Insulator: Teflon
- 3.3 Contact Pin: Beryllium-Copper, Gold plated



Notes:

- 1. ALL SPECIFICATIONS ARE SUBJECT TO CHANGE NOTICE AT ANY TIME
- 2. CUSTOMER OUTLINE DRAWING FOR REFERENCE ONLY

DRAWN: H.wei 19/03/17
ENGINEER: L.yu 19/03/17
APPROVED: W.yi 19/03/17
TOLERANCES UNLESS OTHERWISE SPECIFIED
X ±0.50
.X ±0.20
.XX ±0.10
ANGLES ±1°

TITLE:
RF Connector
SMA Female Connector
For PCB

PART NO: HL-SMA-KHD2



DIMENSION IN MILLIMETERS (mm)

SIZE: A4	SCALE: N/A	SHEET: 1/1	REV: A
----------	------------	------------	--------