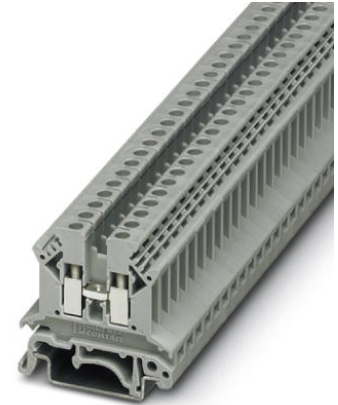


UK 2,5 B

Order No.: 3001035



<http://eshop.phoenixcontact.de/phoenix/treeViewClick.do?UID=3001035>

Feed-through modular terminal block, Type of connection: Screw connection, Cross section: 0.2 mm² - 4 mm², AWG 24 - 12, Width: 6.2 mm, Color: gray, Mounting type: NS 35/7,5, NS 35/15

Commercial data

EAN	4017918089788
Pack	50 pcs.
Customs tariff	85369010
Weight/Piece	0.008138 KG

Product notes

WEEE/RoHS-compliant since:
01/01/2003



<http://>

www.download.phoenixcontact.com
Please note that the data given here has been taken from the online catalog. For comprehensive information and data, please refer to the user documentation. The General Terms and Conditions of Use apply to Internet downloads.

Certificates / Approvals



Certification

BV, CSA, CUL, GOST, KEMA, KR, LR, RS, UL

CSA

Nominal voltage U_N	600 V
Nominal current I_N	25 A
AWG/kcmil	28-12

CUL

Nominal voltage U_N	600 V
Nominal current I_N	20 A
AWG/kcmil	30-12

UL

Nominal voltage U_N	600 V
Nominal current I_N	20 A
AWG/kcmil	30-12

Accessories

Item	Designation	Description
Assembly		
3003224	ATP-UK	Partition plate, Length: 56 mm, Width: 1.5 mm, Height: 59 mm, Color: gray
3022218	CLIPFIX 35	Snap-on end bracket, for 35 mm NS 35/7.5 or NS 35/15 DIN rail, can be fitted with Zack strip ZB 8 and ZB 8/27, terminal strip marker KLM 2 and KLM, width: 9.5 mm, color: gray
3001022	D-UK 2,5	End cover, Length: 37.6 mm, Width: 1.5 mm, Height: 30.7 mm, Color: gray
3001103	D-UK 2,5 BU	End cover, Length: 42.5 mm, Width: 1.5 mm, Height: 42 mm, Color: blue
1201442	E/UK	End clamp, for assembly on NS 32 or NS 35/7,5 DIN rail
0201595	FB-150 METER	Cross connection rail, for fixed bridging of identical inputs and outputs, made of Cu, nickel-plated, 1 m long
1201028	NS 32 AL UNPERF 2000MM	G rail 32 mm (NS 32)
1201002	NS 32 PERF 2000MM	G-profile DIN rail, material: Steel, perforated, height 15 mm, width 32 mm, length 2 m
1201015	NS 32 UNPERF 2000MM	G-profile DIN rail, material: Steel, unperforated, height 15 mm, width 32 mm, length 2 m
0801733	NS 35/ 7,5 PERF 2000MM	DIN rail, material: Steel, galvanized and passivated with a thick layer, perforated, height 7.5 mm, width 35 mm, length: 2 m
0801681	NS 35/ 7,5 UNPERF 2000MM	DIN rail, material: Steel, unperforated, height 7.5 mm, width 35 mm, length: 2 m

1201756	NS 35/15 AL UNPERF 2000MM	DIN rail, deep-drawn, high profile, unperforated, 1.5 mm thick, material: Aluminum, height 15 mm, width 35 mm, length 2 m
2770215	TS-KK 3	Separating plate, Color: gray
0200017	ZSR-EX	Distance piece, metal, for branches of FB-150, with screw and thrust washer

Bridges

0201155	EB 2- 6	Cross connector/bridge, Number of positions: 2, Color: gray
0201142	EB 3- 6	Cross connector/bridge, Number of positions: 3, Color: gray
0201139	EB 10- 6	Cross connector/bridge, Number of positions: 10, Color: gray
0201456	FB 2- 6-EX	Cross connector/bridge, Number of positions: 2, Color: aluminum
0201469	FB 3- 6-EX	Cross connector/bridge, Number of positions: 3, Color: aluminum
0201029	FB 5- 6	Cross connector/bridge, Number of positions: 5, Color: aluminum
0201184	FB 10- 6	Cross connector/bridge, Number of positions: 10, Color: aluminum
0201281	FB 10- 6-EX	Cross connector/bridge, Number of positions: 10, Color: aluminum
0201524	FB 100- 6	Cross connector/bridge, Number of positions: 100, Color: aluminum
0203250	FBI 10- 6	Cross connector/bridge, Number of positions: 10, Color: silver
0201650	FBI 100- 6	Cross connector/bridge, Number of positions: 100, Color: aluminum
0201867	FBI 20- 6	Cross connector/bridge, Number of positions: 20, Color: aluminum
1302338	IS-K 4	Bridge bar isolator, Color: gray
0301505	ISSBI 10- 6	Switching jumper, Number of positions: 10, Color: silver
0201485	KB- 6-EX	Cross connector/bridge, Number of positions: 1, Color: silver
0202280	LB 10-6 BU	Cross connector/bridge, Number of positions: 10, Color: blue
0202358	LB 10-6 GY	Cross connector/bridge, Number of positions: 10, Color: gray
1413230	SBRN 2-7	Cross connector/bridge, Color: silver
2303239	USBR 2-7	Cross connector/bridge, Color: silver
2305538	USBRJ 2-7	Cross connector/bridge, Number of positions: 2, Color: silver

Marking

1004115	WS 3- 6	Warning plate, with 2 plastic screws, across 3 terminal blocks, pitch 6 mm
1004209	WS 4- 6	Warning plate, with 2 plastic screws, across 4 terminal blocks, pitch 6 mm
1004403	WS 5- 6	Warning plate, with 2 plastic screws, across 5 terminal blocks, pitch 6 mm
1050499	ZB 6:SO/CMS	Zack strip, 10-section, divisible, special printing, marking according to customer requirements

Plug/Adapter

0309523	KSS 3- 6	Short circuit connector, Number of positions: 3, Color: black
0301547	KSS 6	Short circuit connector, Number of positions: 2, Color: black
3001132	PS-UK 2,5 B/E	Test plugs, Color: red
3001239	PS-UK 2,5 B/Z-6	Test plugs, Color: red
0601292	PSB 3/10/4	Female test connector, Color: silver
0201304	PSBJ 3/13/4	Female test connector, Color: silver
0201647	RPS	Reducing plug, Color: gray

UK 2,5 B Order No.: 3001035

<http://eshop.phoenixcontact.de/phoenix/treeViewClick.do?UID=3001035>

Address

PHOENIX CONTACT Deutschland GmbH
Flachmarktstr. 8
32825 Blomberg, Germany
Phone +49 5235 3 12000
Fax +49 5235 3 41200
<http://www.phoenixcontact.de>



© 2010 Phoenix Contact
Technical modifications reserved;