

### 产品参数/Product parameters

额定电流 (Rated current): 50mA @ 12 VDC

寿命实验 (Life Test): 100,000 cycles typical

接触电阻 (Contact Resistance): 100MΩ max.

绝缘电阻 (Insulation Resistance): 100MΩ min.

按键行程 (Key stroke): 0.20±0.1mm

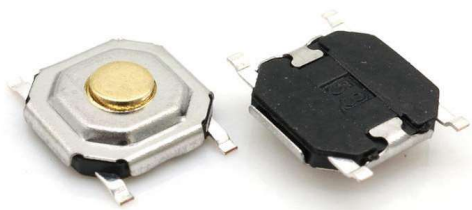
驱动力 (Actuation Force): 100gf, 160gf, 260gf

工作温度 (Operating Temperature): -20° C to 70° C

介电强度 (Dielectric Strength): AC 250V 50HZ 1 minute

存储温度 (Storage Temperature): -30° C T0+80° C

最小包装 (Minimum package): 4000PCS (卷装)



#### 产品名称 Product name

- ▶ 4 \* 4 铜头
- ▶ 4 \* 4 copper head

#### 产品应用场景 Product application scenario

- ▶ 电子通讯/数码产品/家用电器
- ▶ 外围设备/汽车/医疗设备等.
- ▶ Electronic communication/digital products/household appliance peripherals/Automobile/medical equipment, etc

#### 材质/MATERIALS:

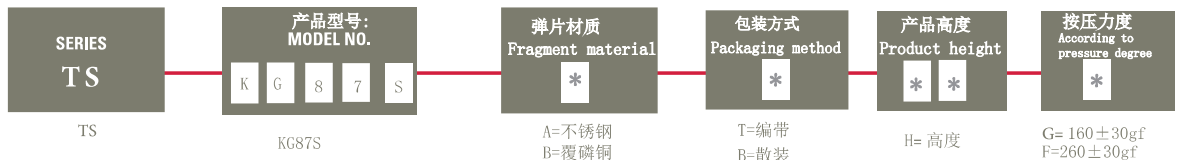
| No. | 名称<br>NAME        | 材料<br>MATERIAL | 表面处理/颜色<br>Surface treatment/color |
|-----|-------------------|----------------|------------------------------------|
| ①   | 按钮<br>Button      | Brass          | 黄色<br>Yellow                       |
| ②   | 盖板<br>Cover plate | SPCC           | 镀镍<br>NICKel plated                |
| ③   | 底座<br>Base        | Nylon          | 黑色<br>Black                        |
| ④   | 弹片<br>Shrapnel    | F. Ag/SUS      | 镀银<br>Plate with silver            |
| ⑤   | 端子<br>Terminal    | Brass          | 镀银<br>Plate with silver            |

#### 产品高度/Product height:

| 产品高度/Product height |     |      |   |
|---------------------|-----|------|---|
| Code                | H   | Code | H |
| 15                  | 1.5 |      |   |
| 16                  | 1.6 |      |   |
| 17                  | 1.7 |      |   |
| 18                  | 1.8 |      |   |
| 19                  | 1.9 |      |   |
| 20                  | 2.0 |      |   |
| 25                  | 2.5 |      |   |
| 30                  | 3.0 |      |   |
| 35                  | 3.5 |      |   |
| 43                  | 4.3 |      |   |

TACT Switch™

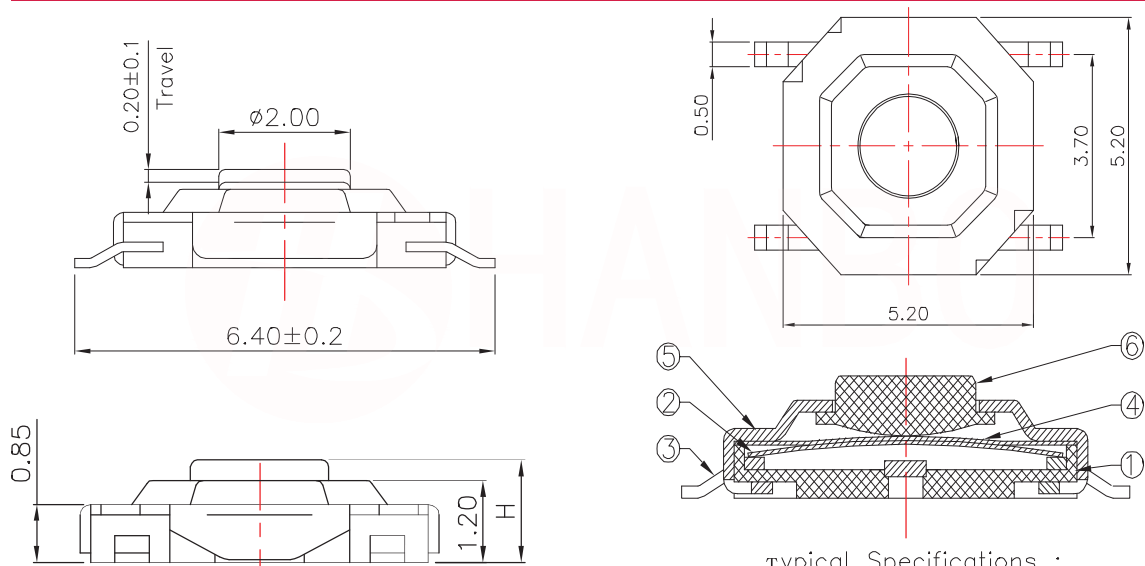
#### 产品编号/Product No



#### 产品订购号示意图/Schematic diagram of product order number

Schematic diagram of product order number: TS-KG87S-AT15F

#### 产品外形尺寸图/Outline dimension drawing of product

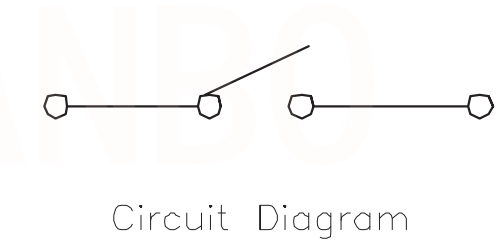
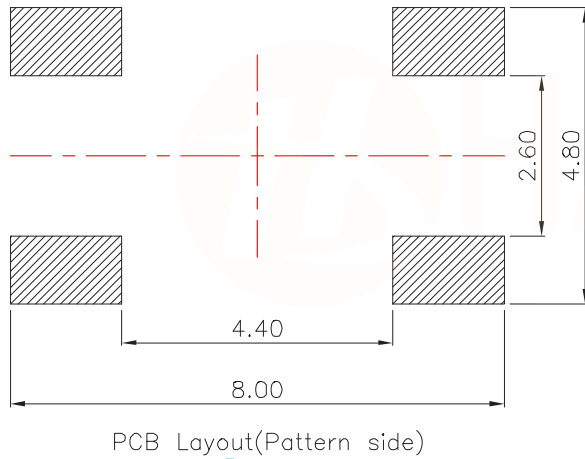


Typical Specifications :  
 1. Rating : DC 12V 50mA  
 2. Life:100,000 Cycles Min.

连接器领域专家

让世界连接更清晰

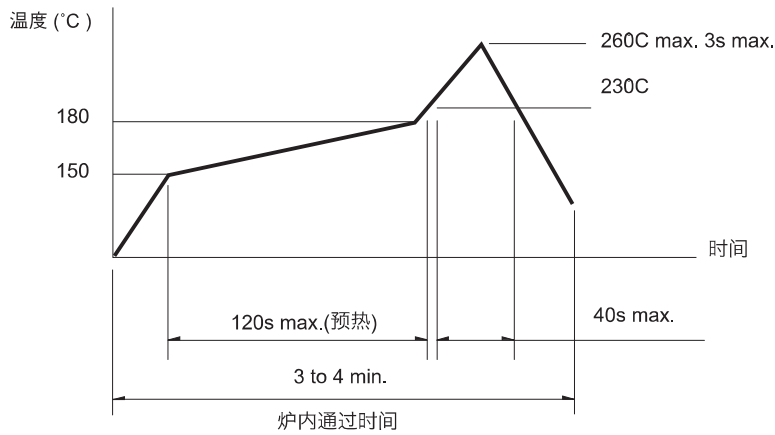
▶ ▶ ▶ 线路图/Circuit diagram



▶ ▶ ▶ 焊接条件/Welding conditions

■ 回流焊时/During reflow soldering

适用于表面贴装型温度分布/Applicable to surface mount temperature distribution



注/notes

- 关于详细条件，请于本公司的产品规格书进行确认。  
Please confirm the detailed conditions in our product specification
- 根据贴面焊槽的种类，条件不同结果不同，请事先充分进行确认之后使用。  
According to the type of veneer welding groove and different conditions, the results are different. Please fully confirm before using.

■ 自动浸焊式/Automatic dip welding

| 项目     | 条件                       |
|--------|--------------------------|
| 助焊剂附着量 | 不附着于零部件贴装面的程度            |
| 预热温度   | 印刷电路板焊接面的周围温度 100°C max. |
| 预热温度时间 | 60s max.                 |
| 焊接温度   | 260°C max.               |
| 焊接浸渍时间 | 5s max.                  |
| 焊接次数   | 2 times max.             |

注/notes

- 请不要从轻触开关上面浸入助焊剂。  
Do not immerse the flux on the touch switch
- 请不要事前在开关端子及印刷电路板的零部件贴装面上涂助焊剂。  
Please do not apply flux on the mounting surface of switch terminals and printed circuit board components in advance
- 进行第 2 次焊接时，应在开关回复到常温之后进行。  
The second welding shall be carried out after the switch returns to normal temperature.

■ 手焊式/Hand welded

| 项目     | 条件         |
|--------|------------|
| 焊接温度   | 350°C max. |
| 焊接浸渍时间 | 3s max.    |
| 焊剂斗容量  | 60W max.   |